

PARTS INDEX

For Lathes From Serial No. 506056 To _____

Cabinet	18.1
Bed	19.1
Headstock Casting and Gear Train Guard	20.1
Headstock	21.1
Quick-Change Gear Box	22.2
Gear Train	23
Electrical Assembly	24
Countershaft	25.5
Countershaft with Clutch and Brake	26.5
Motor Base Assembly	27
Variable Speed Control	28
Variable Speed Motor Pulley	29.3
Cross Slide	30
Carriage	31
Apron	32.1 & 33.2
Tailstock	34.1

INSTRUCTIONS FOR ORDERING REPAIR PARTS

It is important to furnish the following information in addition to QUANTITY required:

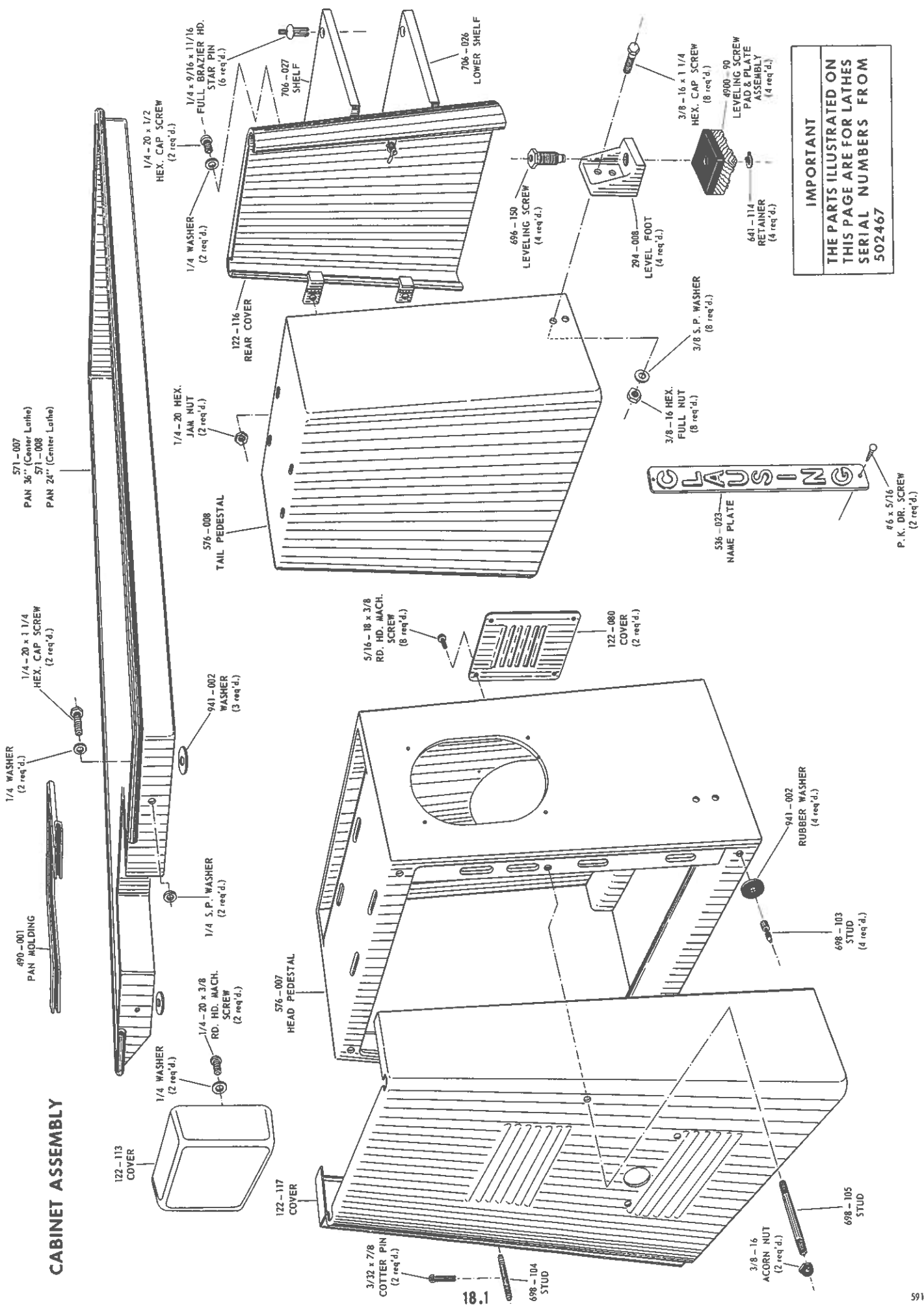
1. PART NUMBER
2. PART NAME
3. MODEL and SERIAL NUMBER of machine tool – you'll find both on the metal plate attached to machine – note illustration below.



NOTE: Screws and nuts shown without part numbers should be purchased locally.

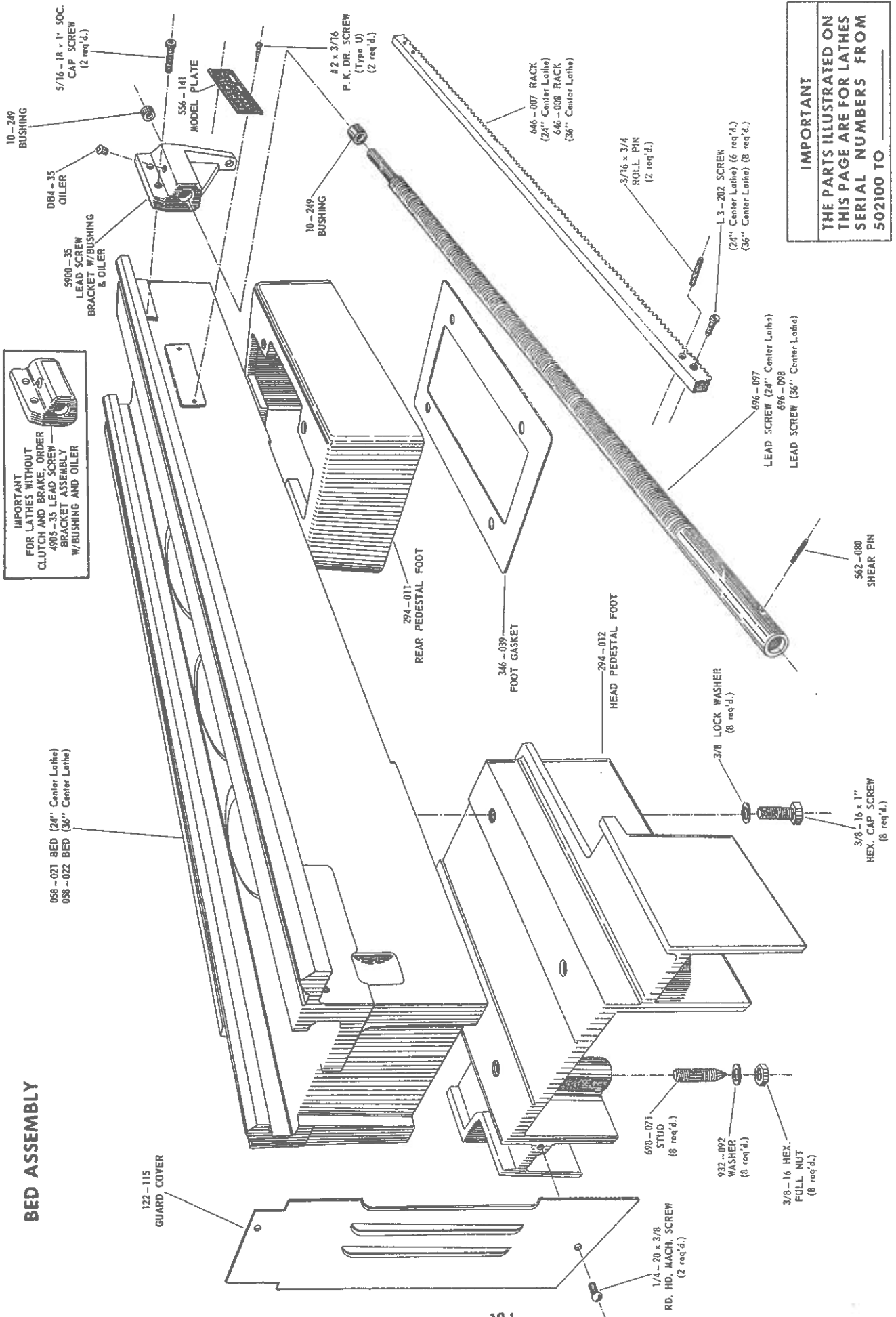
We reserve the right to make changes in design and specifications without notice.

CABINET ASSEMBLY



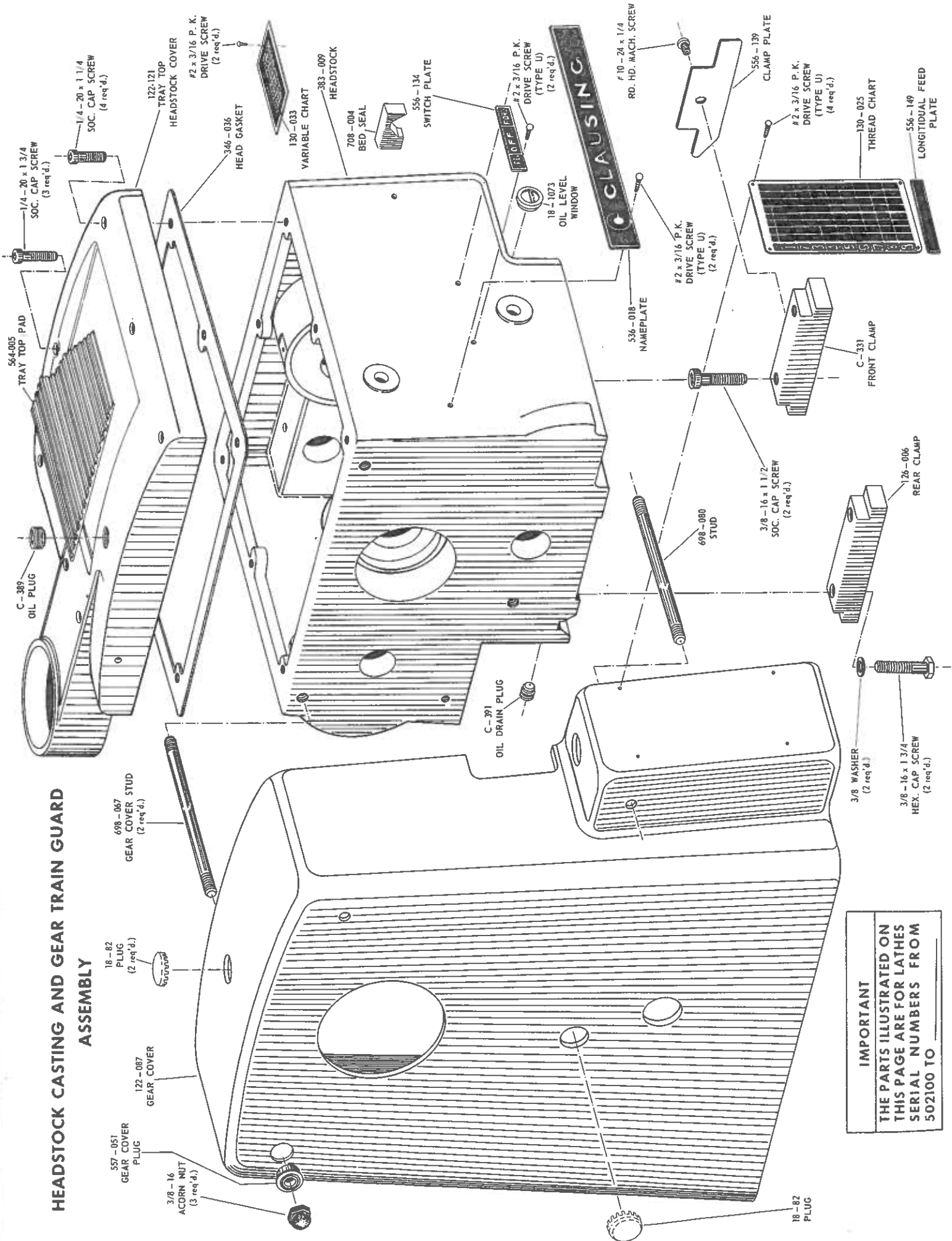
IMPORTANT
 THE PARTS ILLUSTRATED ON
 THIS PAGE ARE FOR LATHES
 SERIAL NUMBERS FROM
 502467

BED ASSEMBLY

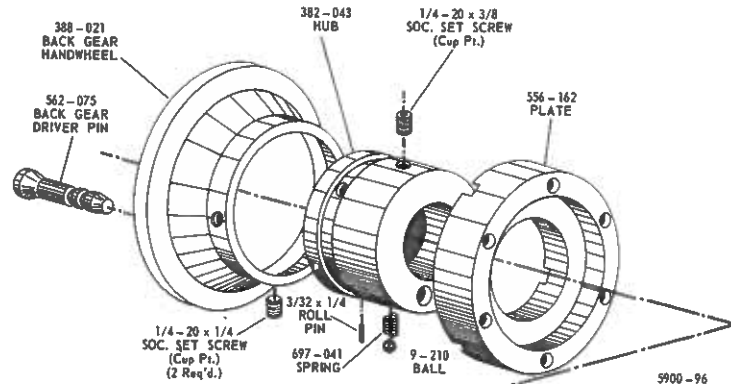


IMPORTANT
 THE PARTS ILLUSTRATED ON
 THIS PAGE ARE FOR LATHES
 SERIAL NUMBERS FROM
 502100 TO _____

HEADSTOCK CASTING AND GEAR TRAIN GUARD ASSEMBLY

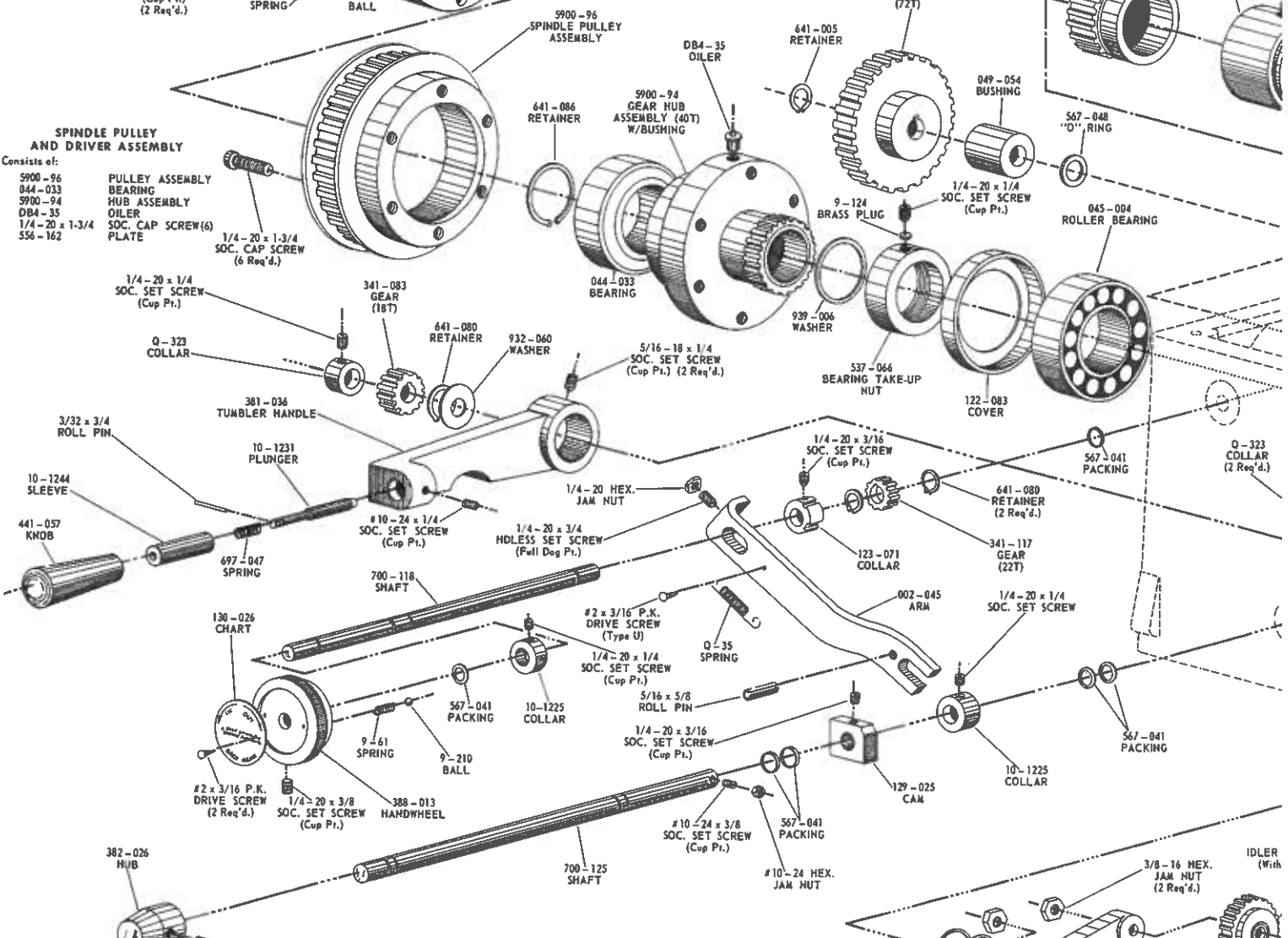


IMPORTANT
 THE PARTS ILLUSTRATED ON THIS PAGE ARE FOR LATHES SERIAL NUMBERS FROM 502100 TO



SPINDLE PULLEY AND DRIVER ASSEMBLY

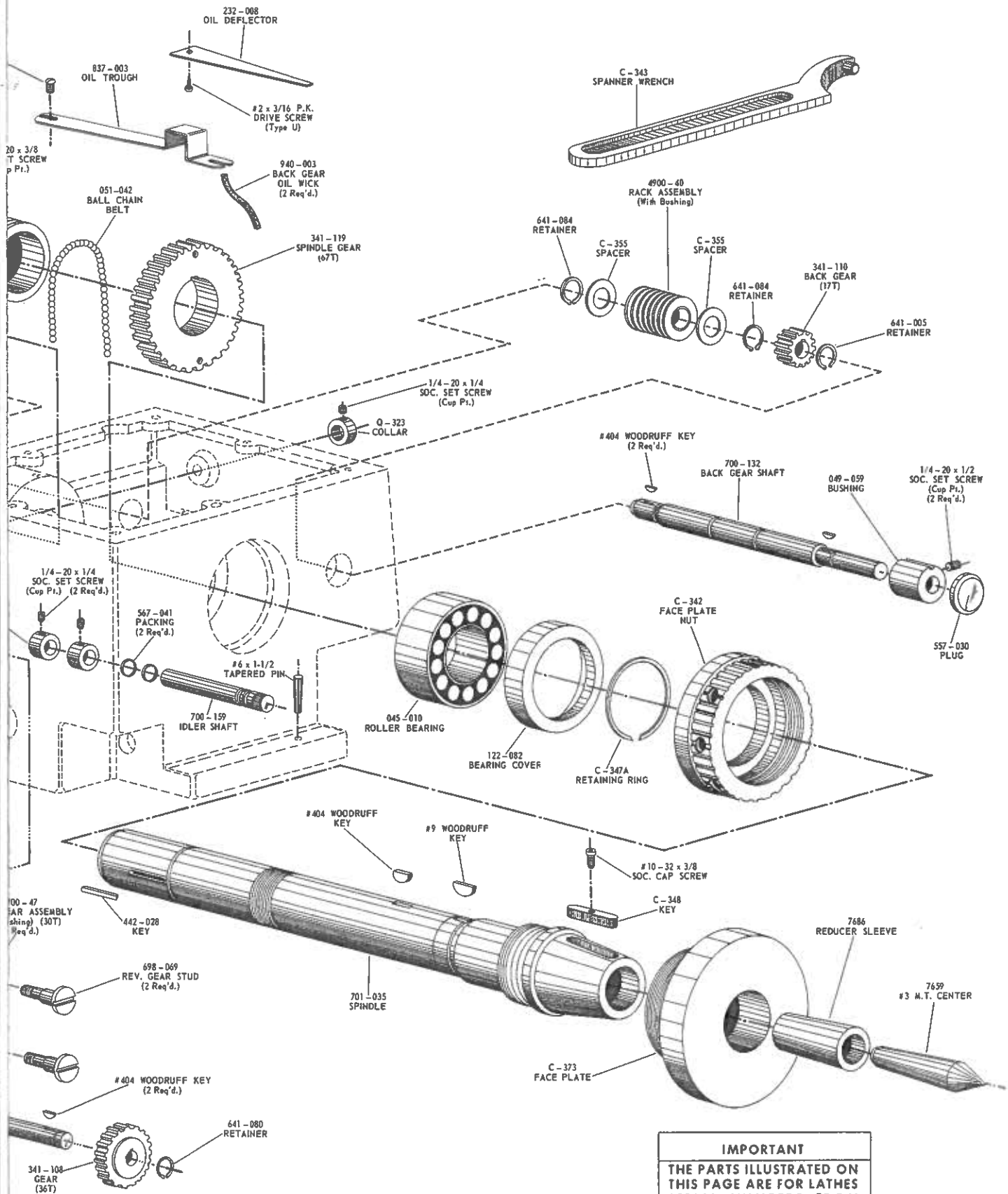
- Consists of:
- 5900-96 PULLEY ASSEMBLY BEARING HUB ASSEMBLY OILER
 - 044-033 SOC. CAP SCREW (6)
 - 5900-94 DB4-35
 - 1/4-20 x 1-3/4
 - 556-162 PLATE



5900-122 REV. SWITCH ASSEMBLY

- Consists of:
- 382-026 HUB
 - 441-056 KNOB
 - 567-041 "O" RING (4)
 - 698-070 STUD
 - 700-125 SHAFT
 - 1/4-20 x 3/8 SOC. SET SCREW

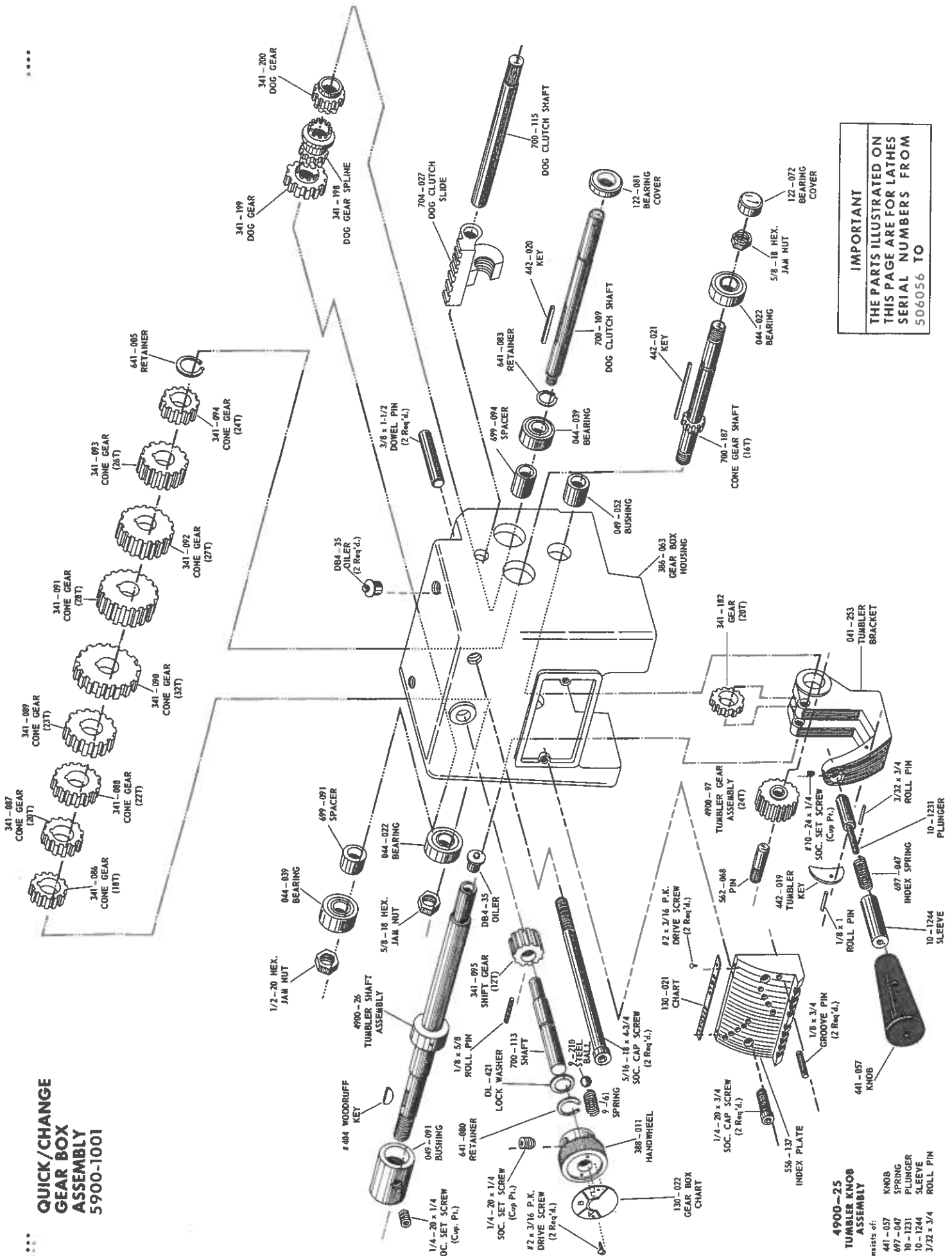
ASSEMBLY



IMPORTANT
 THE PARTS ILLUSTRATED ON THIS PAGE ARE FOR LATHES SERIAL NUMBERS FROM 502260 TO

...

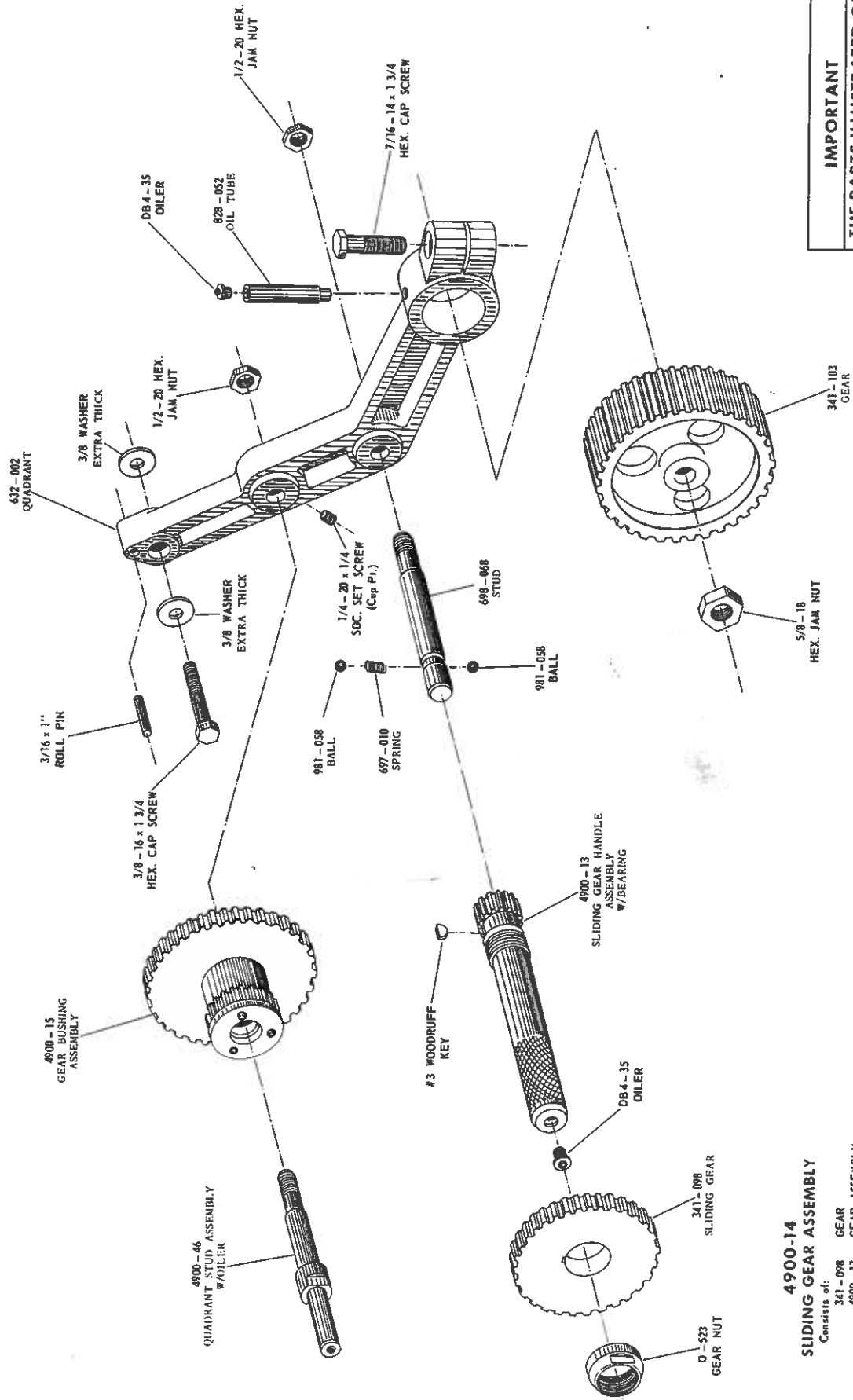
**QUICK/CHANGE
GEAR BOX
ASSEMBLY
5900-1001**



IMPORTANT
THE PARTS ILLUSTRATED ON
THIS PAGE ARE FOR LATHES
SERIAL NUMBERS FROM
506056 TO

**4900-25
TUMBLER KNOB
ASSEMBLY**
Consists of:
441-057 KNOB
697-047 SPRING
10-1231 PLUNGER
10-1244 SLEEVE
3/32 x 3/4 ROLL PIN

QUADRANT ASSEMBLY NO. 4900-29

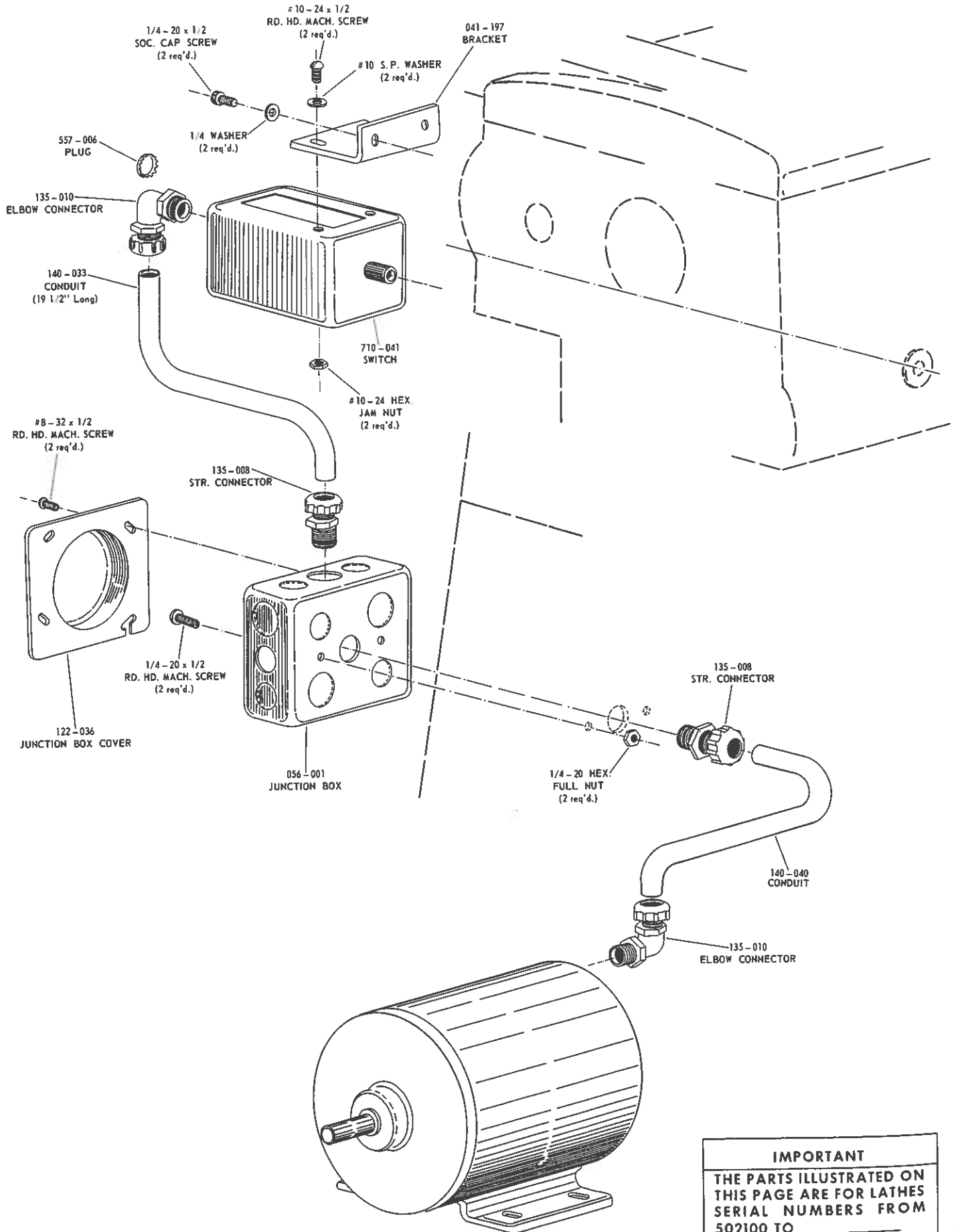


IMPORTANT
THE PARTS ILLUSTRATED ON
THIS PAGE ARE FOR LATHES
SERIAL NUMBERS FROM
502100 TO _____

4900-14 SLIDING GEAR ASSEMBLY

- Consists of:
- 341-098 GEAR
 - 4900-13 GEAR ASSEMBLY
 - DB4-35 OILER
 - 0-523 NUT
 - #3 WOODRUFF KEY

ELECTRICAL ASSEMBLY



IMPORTANT

THE PARTS ILLUSTRATED ON THIS PAGE ARE FOR LATHES SERIAL NUMBERS FROM 502100 TO _____

**5900-136
C'SHAFT VARI. PULLEY
ASSEMBLY (SEE NOTE)***

- Consists of:
 300-002 FAN
 641-086 SPRING RETAINER
 641-116 PULLEY SPRING
 697-038 SLIDING C'SHAFT
 PULLEY ASSEMBLY
 5900-135 PULLEY AND KEY ASSY.

NOTE*
 (MUST ORDER 5900-136
 C'SHAFT VARI. PULLEY
 ASSEMBLY FOR REPAIR.)

**COUNTERSHAFT ASSEMBLY W/O CLUTCH
 5900-1006**

**5905-115
 COUNTERSHAFT SPINDLE
 ASSEMBLY W/O CLUTCH**

- Consists of:
 044-017 BEARING (2)
 382-060 DRIVE HUB
 442-046 PULLEY KEY
 442-053 DRIVE KEY
 641-011 RETAINER (2)
 699-142 SPACER
 699-146 SPACER
 701-052 SPINDLE
 5900-140 C'SHAFT PULLEY ASSY.
 5900-136 C'SHAFT VARI. PULLEY ASSEM.

5900-135
 C'SHAFT VARI.
 PULLEY ASSEMBLY
 (See Note)*

5900-65
 SLIDING C'SHAFT
 PULLEY ASSEMBLY
 (See Note)*

641-086
 RETAINER

641-116
 SPRING
 RETAINER

300-002
 PULLEY FAN

697-038
 PULLEY SPRING

051-036
 VARI. BELT

MUST ORDER 5900-136
 C'SHAFT VARI. PULLEY ASSEMBLY

5900-40
 C'SHAFT PULLEY
 ASSEMBLY

051-047
 TIMING BELT

701-052
 C'SHAFT
 SPINDLE

442-046
 PULLEY
 KEY

442-053
 DRIVER KEY

382-060
 DRIVER HUB

641-051
 RETAINER

641-011
 RETAINER

641-051
 RETAINER

044-017
 BEARING

3/16 x 1"
 ROLL PIN
 (2 req'd.)

048-052
 BAR
 (2 req'd.)

698-098
 STUD
 (2 req'd.)

698-098
 STUD
 (w req'd.)

3/8 INT. S.P.
 WASHER
 (4 req'd.)

3/8-16 HEX.
 FULL NUT
 (4 req'd.)

4900-80
 C'SHAFT BRACKET
 ASSEMBLY

044-017
 BEARING

699-142
 SPACER

641-011
 RETAINER

**5905-116
 C'SHAFT ASSEMBLY
 W/O CLUTCH**

- Consists of:
 051-036 VARI. BELT
 051-047 TIMING BELT
 641-051 RETAINER
 4900-80 C'SHAFT BRKT. ASSEM.
 5905-115 C'SHAFT SPINDLE ASSEM.
 641-112 RETAINER

IMPORTANT
 THE PARTS ILLUSTRATED ON
 THIS PAGE ARE FOR LATHES
 SERIAL NUMBERS FROM
 505856 TO

COUNTERSHAFT W/CLUTCH AND BRAKE ASSEMBLY 5900-1005

7166 CLUTCH KICKOUT ASSEMBLY

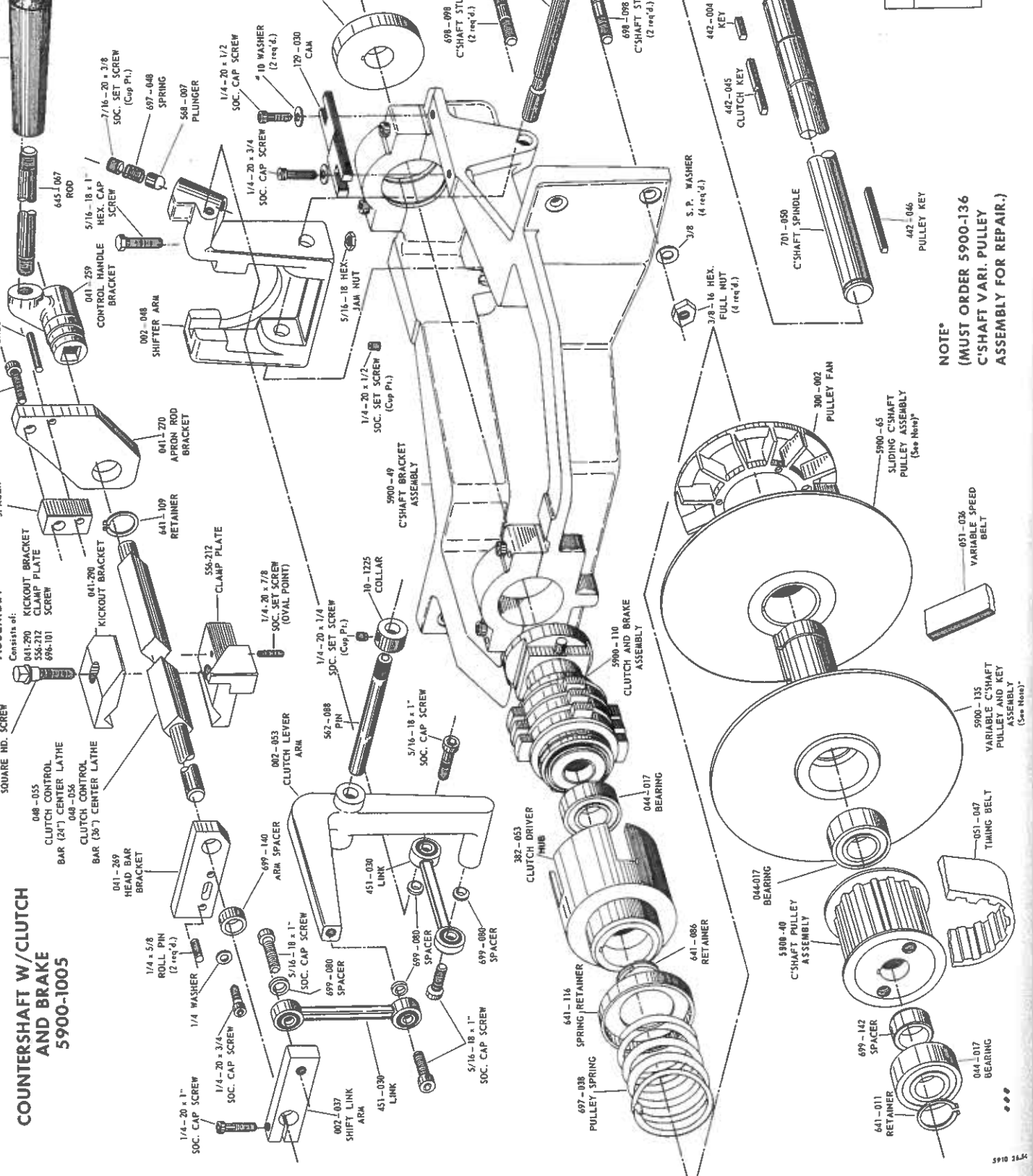
Consists of:

- 696-101 SCREW
- 048-055 CLUTCH CONTROL BAR (2 1/2") CENTER LATHE
- 048-056 CLUTCH CONTROL BAR (3 1/2") CENTER LATHE
- 041-269 HEAD BAR BRACKET
- 041-270 KICKOUT BRACKET
- 556-212 CLAMP PLATE
- 696-101 SCREW
- 699-141 SPACER

5900-47 CLUTCH SPINDLE ASSEMBLY

Consists of:

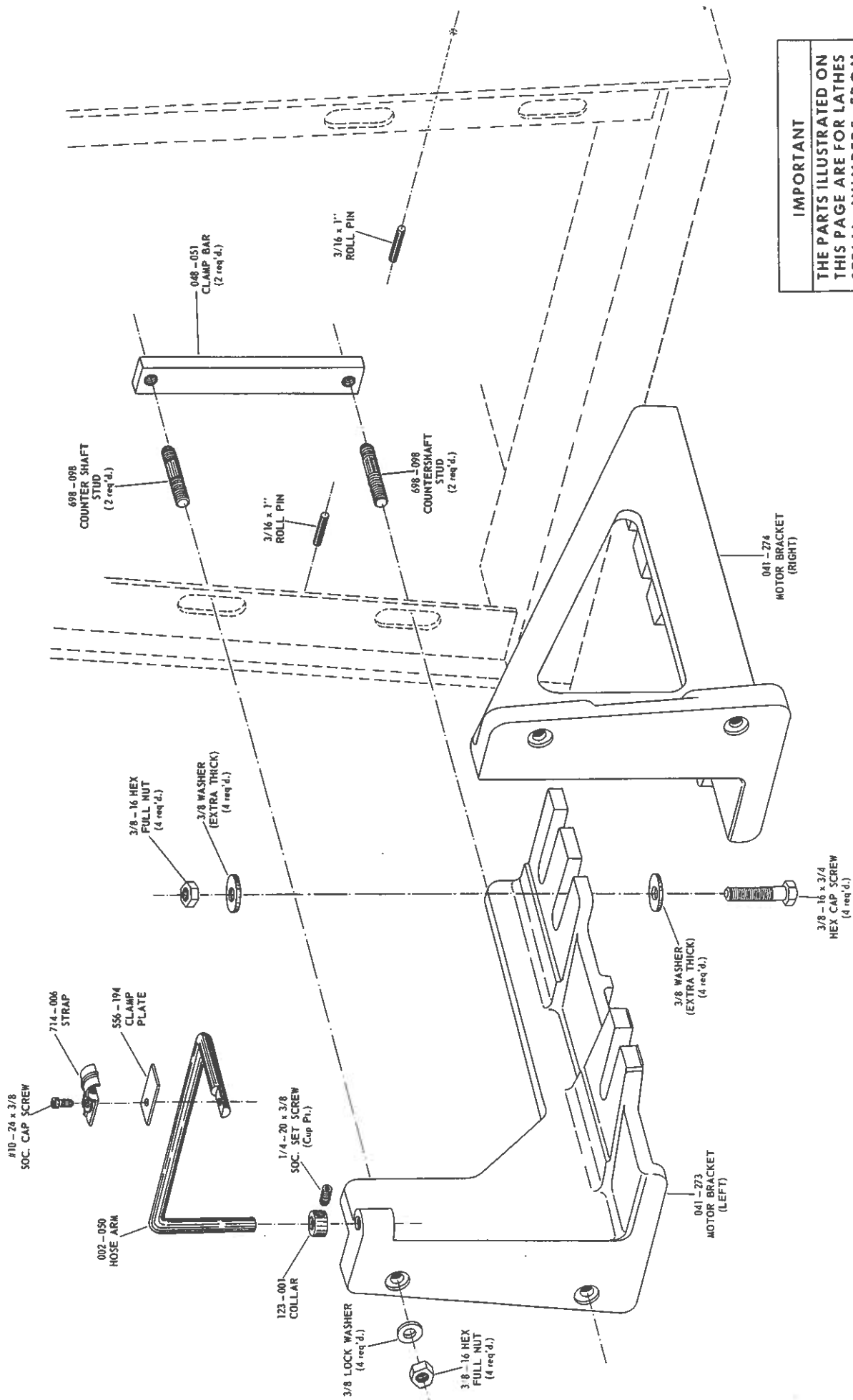
- 044-017 BEARING (4)
- 295-105 ZERK FITTING
- 382-052 HUB
- 442-004 KEY
- 442-045 KEY
- 442-046 KEY
- 641-011 RETAINER (4)
- 699-142 SPACER
- 701-050 C'SHAFT SPINDLE PULLEY ASSY.
- 5900-40 C'SHAFT SPINDLE PULLEY ASSY.
- 300-002 FAN
- 641-086 RETAINER
- 641-086 RETAINER
- 699-038 SLIDING PULLEY ASSY.
- 5900-45 PULLEY ASSEMBLY
- 5900-135 C'SHAFT VARI. PULLEY ASSEMBLY
- 5900-136 C'SHAFT VARI. PULLEY ASSEMBLY



IMPORTANT
THE PARTS ILLUSTRATED ON THIS PAGE ARE FOR LATHES SERIAL NUMBERS FROM 505856 TO

NOTE*
(MUST ORDER 5900-136 C'SHAFT VARI. PULLEY ASSEMBLY FOR REPAIR.)

MOTOR BASE ASSEMBLY

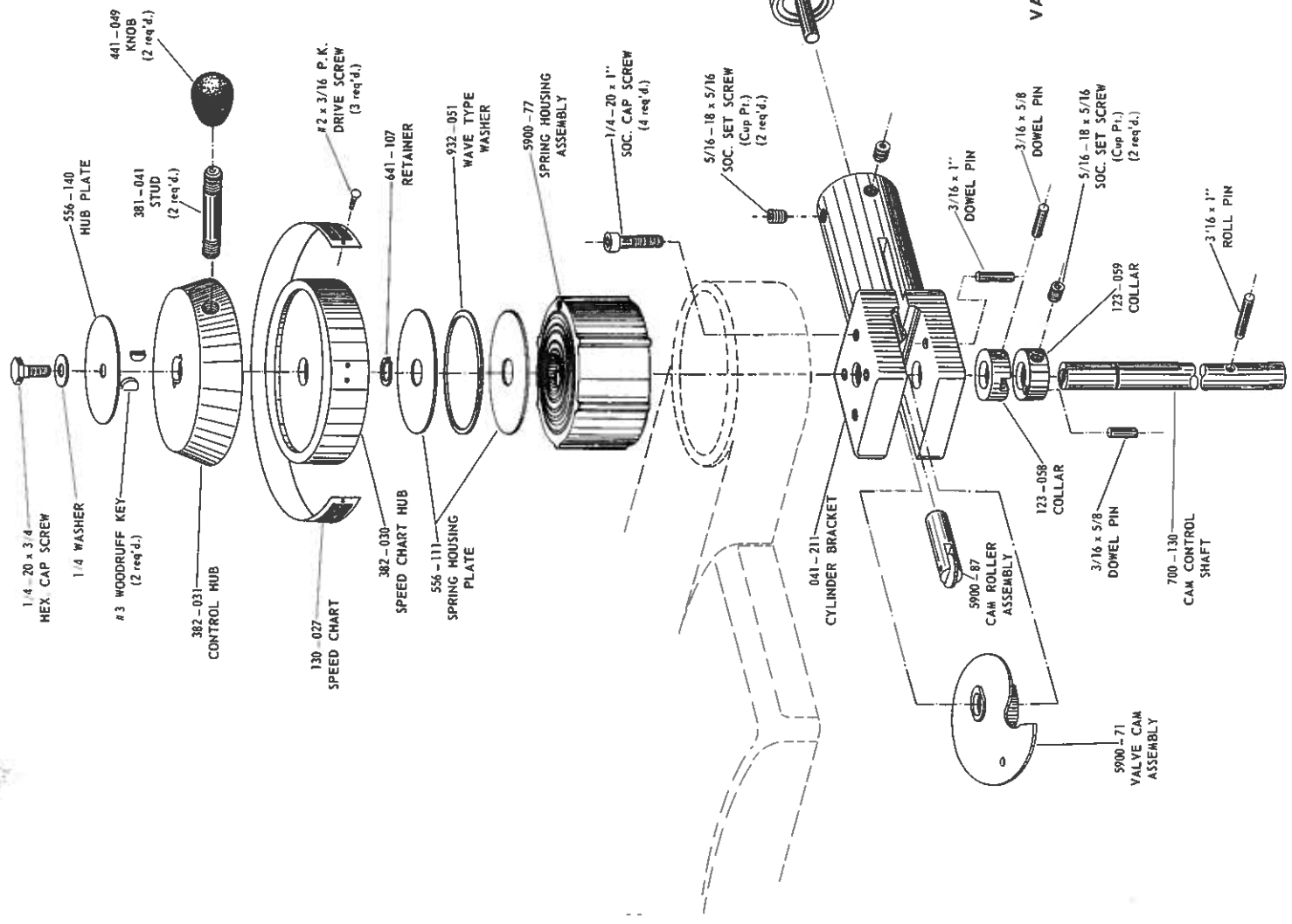


IMPORTANT
 THE PARTS ILLUSTRATED ON
 THIS PAGE ARE FOR LATHES
 SERIAL NUMBERS FROM
 502100 TO _____

VARIABLE SPEED CONTROL

5900-76 SPEED CHART HUB ASSEMBLY

- Consists of:
- 130-027 CHART HUB
 - 382-030 #2 x 3/16 P.K. DRIVE SCREW (3)



5900-72 VALVE CAM AND BRACKET ASSEMBLY

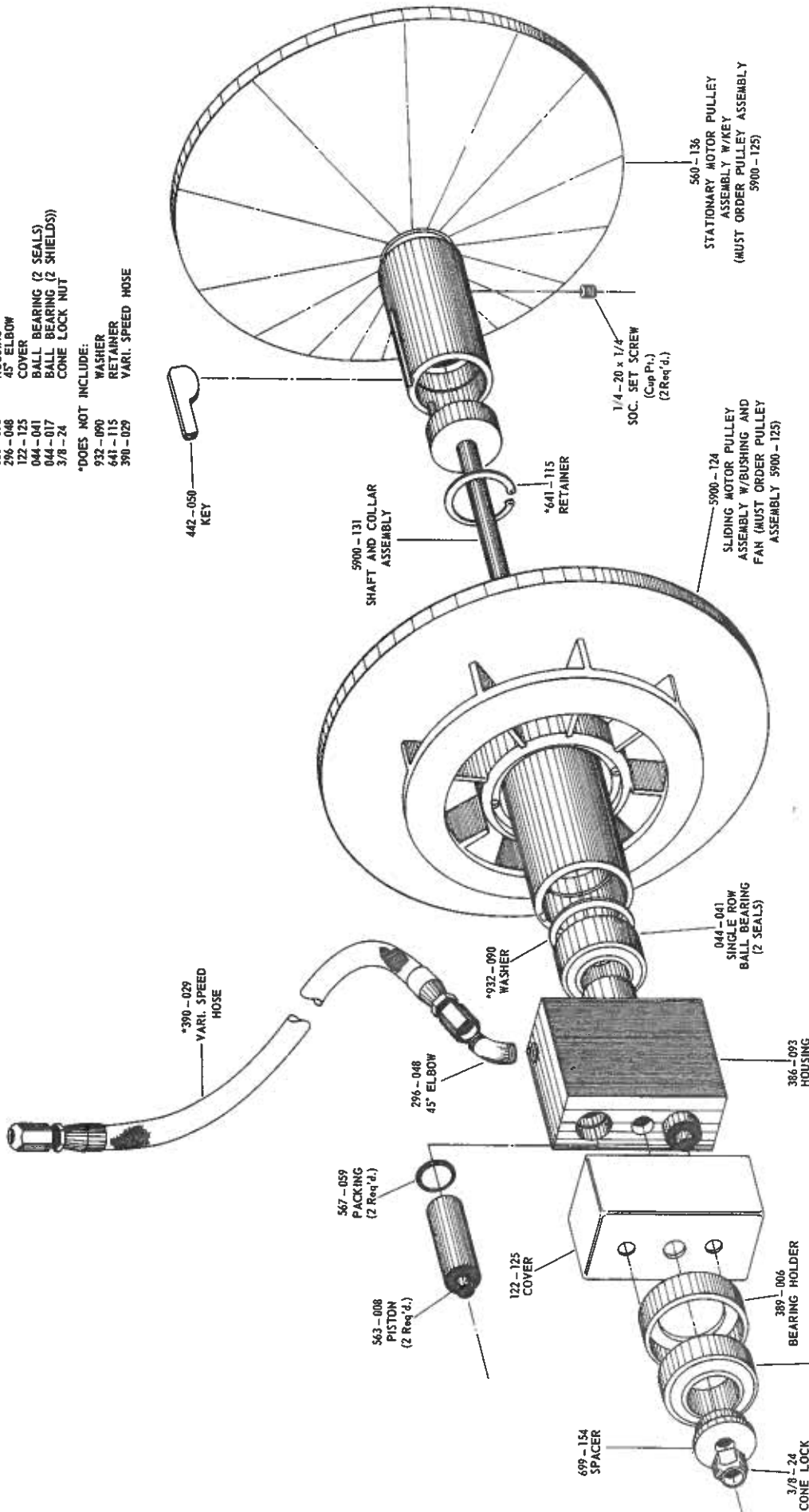
- Consists of:
- 041-211 BRACKET
 - 123-058 COLLAR
 - 123-059 COLLAR
 - 5900-71 CAM ASSEMBLY
 - 700-130 SHAFT
 - 3/16 x 5/8 DOWEL PIN (2)
 - 3/16 x 1\"/>

IMPORTANT
THE PARTS ILLUSTRATED ON THIS PAGE ARE FOR LATHES SERIAL NUMBERS FROM 502100 TO

VARIABLE SPEED MOTOR PULLEY ASSEMBLY 5900-1002

5900-132 CYLINDER AND SHAFT ASSEMBLY

- Consists of:
- 5900-131 SHAFT AND COLLAR ASSEMBLY
 - 699-154 SPACER
 - 567-059 PACKING (2)
 - 563-008 PISTON (2)
 - 389-006 BEARING HOLDER
 - 386-093 HOUSING
 - 296-048 45° ELBOW
 - 122-125 COVER
 - 044-041 BALL BEARING (2 SEALS)
 - 044-017 BALL BEARING (2 SHIELDS)
 - 3/8-24 CONE LOCK NUT
- *DOES NOT INCLUDE:
- 932-090 WASHER
 - 641-115 RETAINER
 - 390-029 VARI. SPEED HOSE



5900-125 MOTOR VARI. PULLEY ASSEMBLY

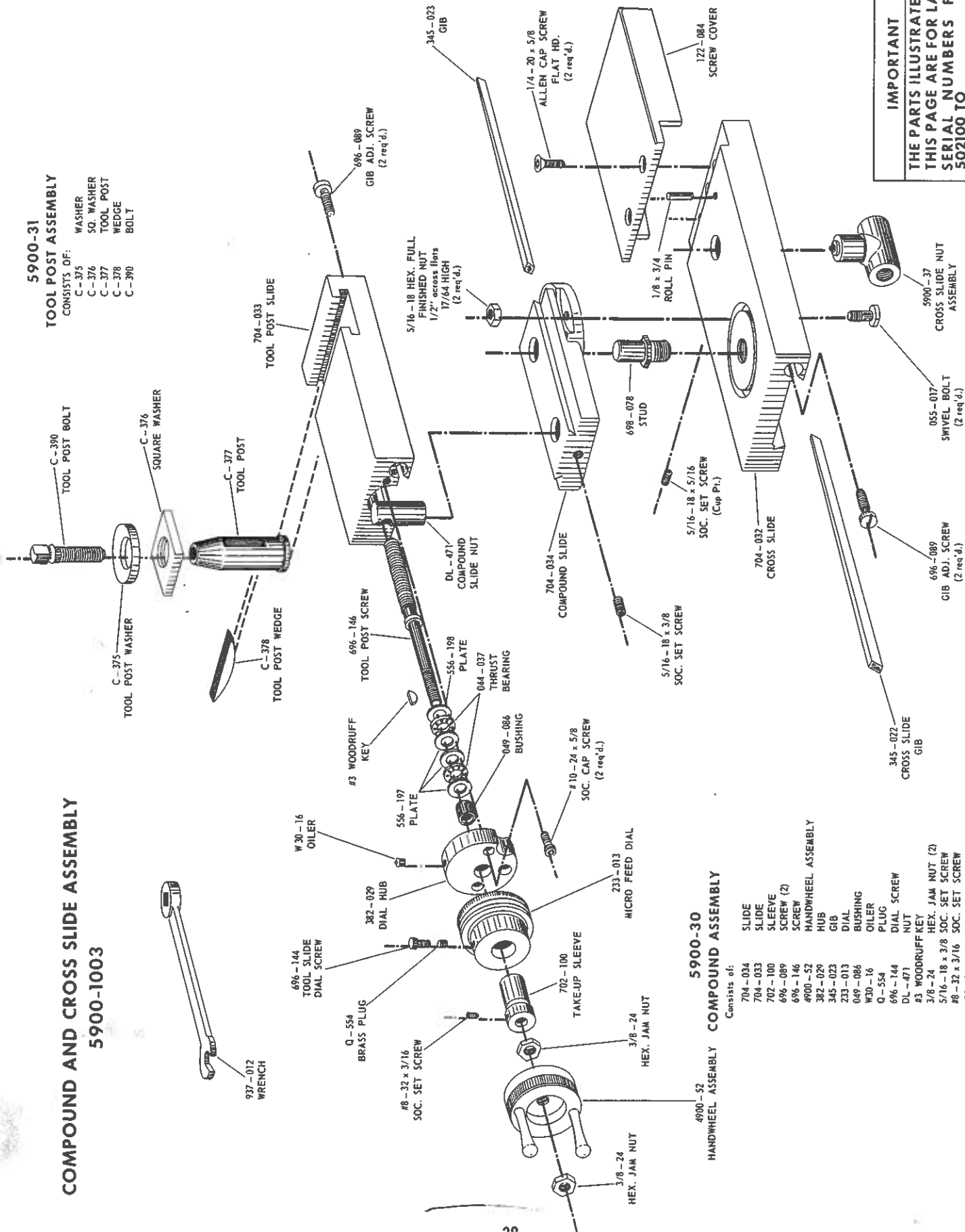
- Consists of:
- 442-050 KEY ASSEMBLY
 - 560-136 STATIONARY MOTOR PULLEY ASSEMBLY
 - 5900-124 SLIDING MOTOR PULLEY ASSEMBLY
 - 1/4-20 x 1/4 SOC. SET SCREW (2)

IMPORTANT
 THE PARTS ILLUSTRATED ON THIS PAGE ARE FOR LATHES SERIAL NUMBERS FROM 505856 TO

COMPOUND AND CROSS SLIDE ASSEMBLY 5900-1003

5900-31 TOOL POST ASSEMBLY

- CONSISTS OF:
 C-375 WASHER
 C-376 SQ. WASHER
 C-377 TOOL POST
 C-378 WEDGE
 C-390 BOLT



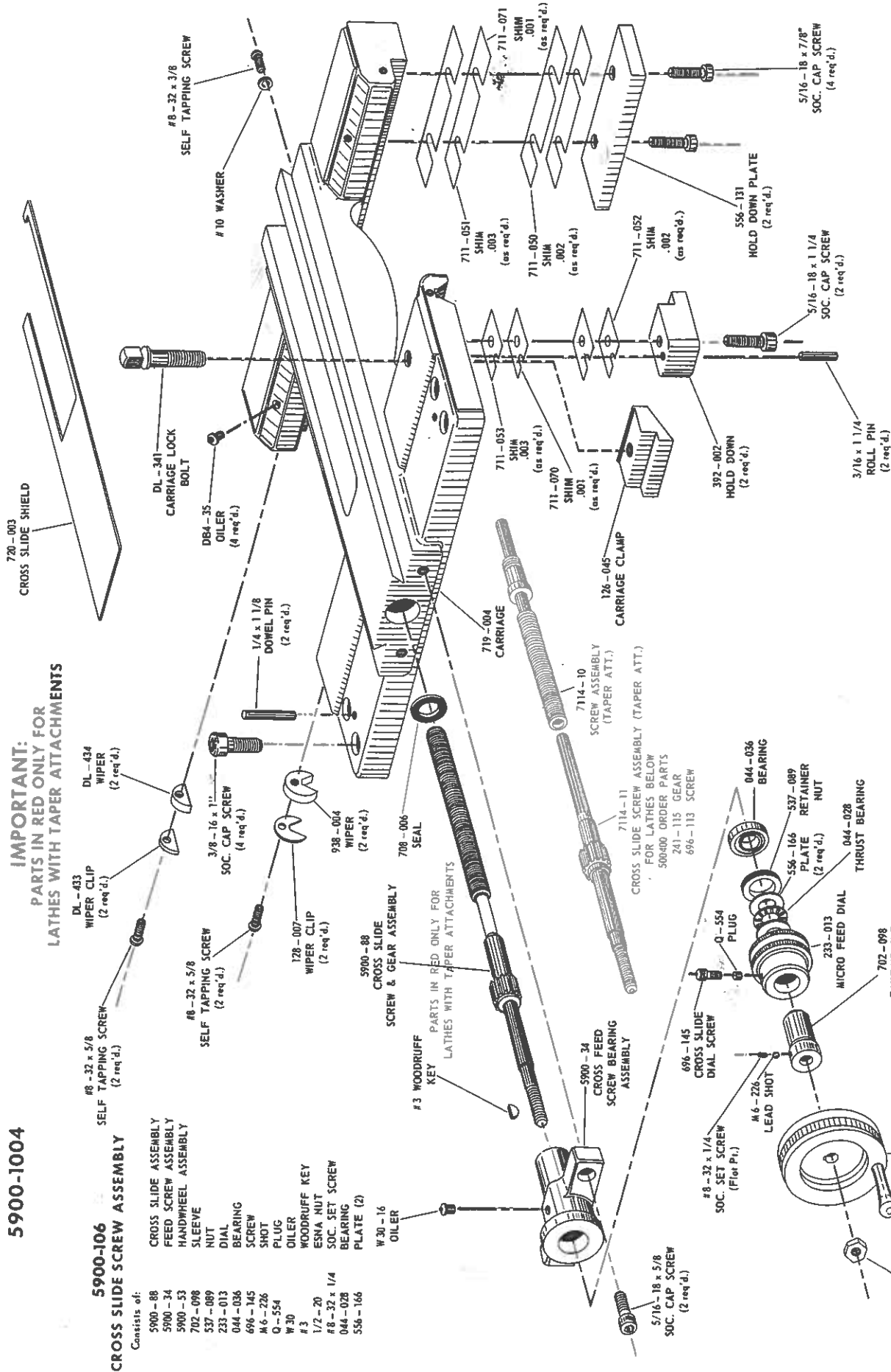
5900-30 HANDWHEEL ASSEMBLY COMPOUND ASSEMBLY

- Consists of:
- 704-034 SLIDE
 - 704-033 SLEEVE
 - 702-100 SCREW (2)
 - 696-089 SCREW
 - 4900-52 HANDWHEEL ASSEMBLY
 - 382-029 HUB
 - 345-023 GIB
 - 233-013 DIAL
 - 049-086 BUSHING
 - W30-16 OILER
 - Q-554 PLUG
 - 696-144 DIAL SCREW
 - DL-471 NUT
 - #3 WOODRUFF KEY
 - 3/8-24 HEX. JAM NUT (2)
 - 5/16-18 x 3/8 SOC. SET SCREW
 - #8-32 x 3/16 SOC. SET SCREW
 - 044-037 PLATE
 - 556-197 BEARING (2)
 - 556-198 PLATE (3)

IMPORTANT
 THE PARTS ILLUSTRATED ON
 THIS PAGE ARE FOR LATHES
 SERIAL NUMBERS FROM
 502100 TO

CARRIAGE SADDLE ASSEMBLY 5900-1004

IMPORTANT:
PARTS IN RED ONLY FOR
LATHES WITH TAPER ATTACHMENTS



5900-106 CROSS SLIDE SCREW ASSEMBLY

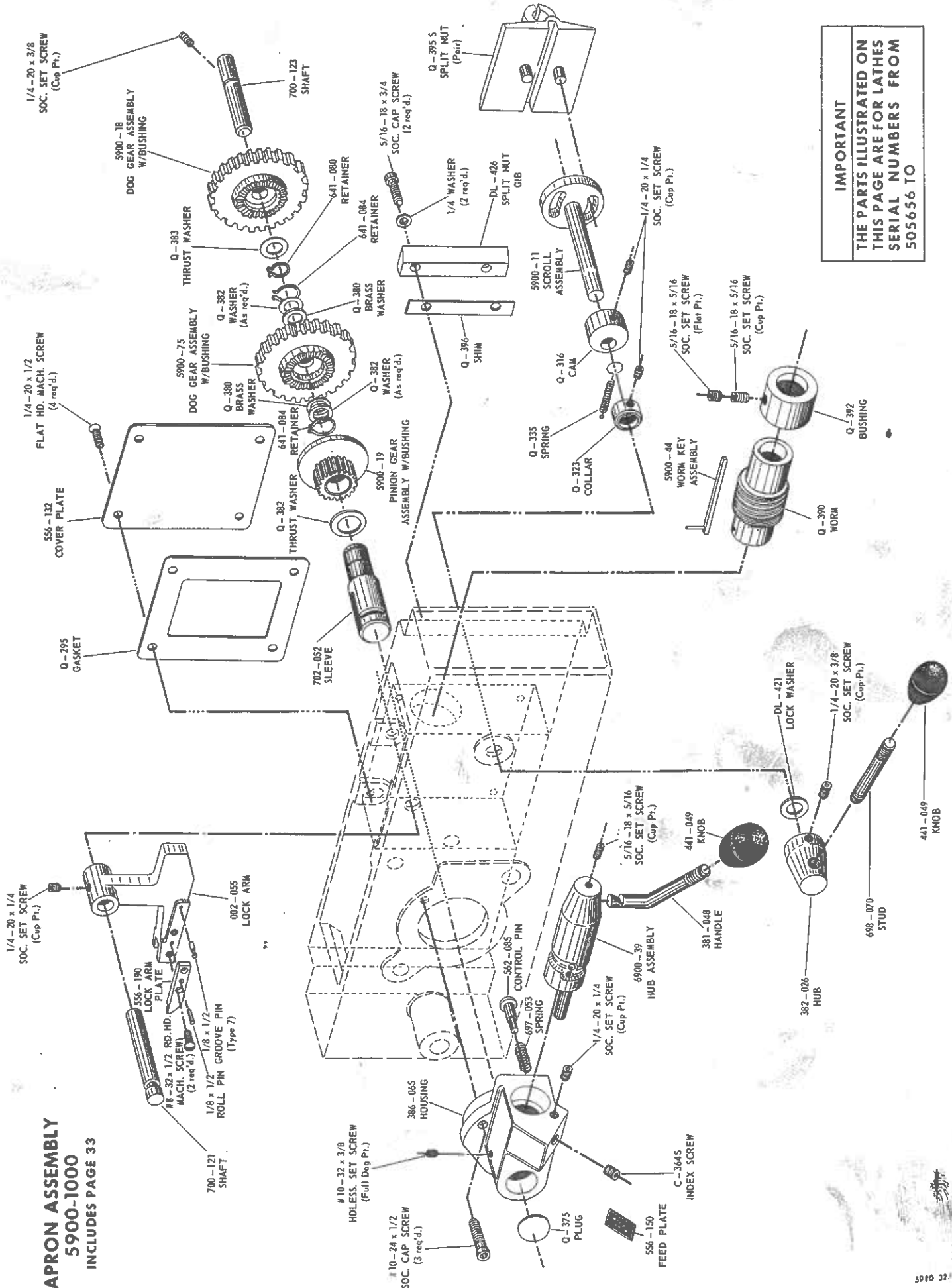
Consists of:

- 5900-88 CROSS SLIDE ASSEMBLY
- 5900-34 FEED SCREW ASSEMBLY
- 5900-53 HANDWHEEL ASSEMBLY
- 702-098 SLEEVE
- 537-089 NUT
- 233-013 DIAL
- 044-036 BEARING
- 696-145 SCREW
- M 6-226 SHOT
- O-554 PLUG
- W 30 OILER
- # 3 WOODRUFF KEY
- 1/2-20 ESNA NUT
- # 8-32 x 1/4 SOC. SET SCREW
- 044-028 BEARING (2)
- 556-166 W 30-16 OILER

PARTS IN RED ONLY FOR
LATHES WITH TAPER ATTACHMENTS

CROSS SLIDE SCREW ASSEMBLY (TAPER ATT.)
FOR LATHES BELOW
500400 ORDER PARTS
241-115 GEAR
696-113 SCREW

IMPORTANT
THE PARTS ILLUSTRATED ON
THIS PAGE ARE FOR LATHES
SERIAL NUMBERS FROM
502100 TO



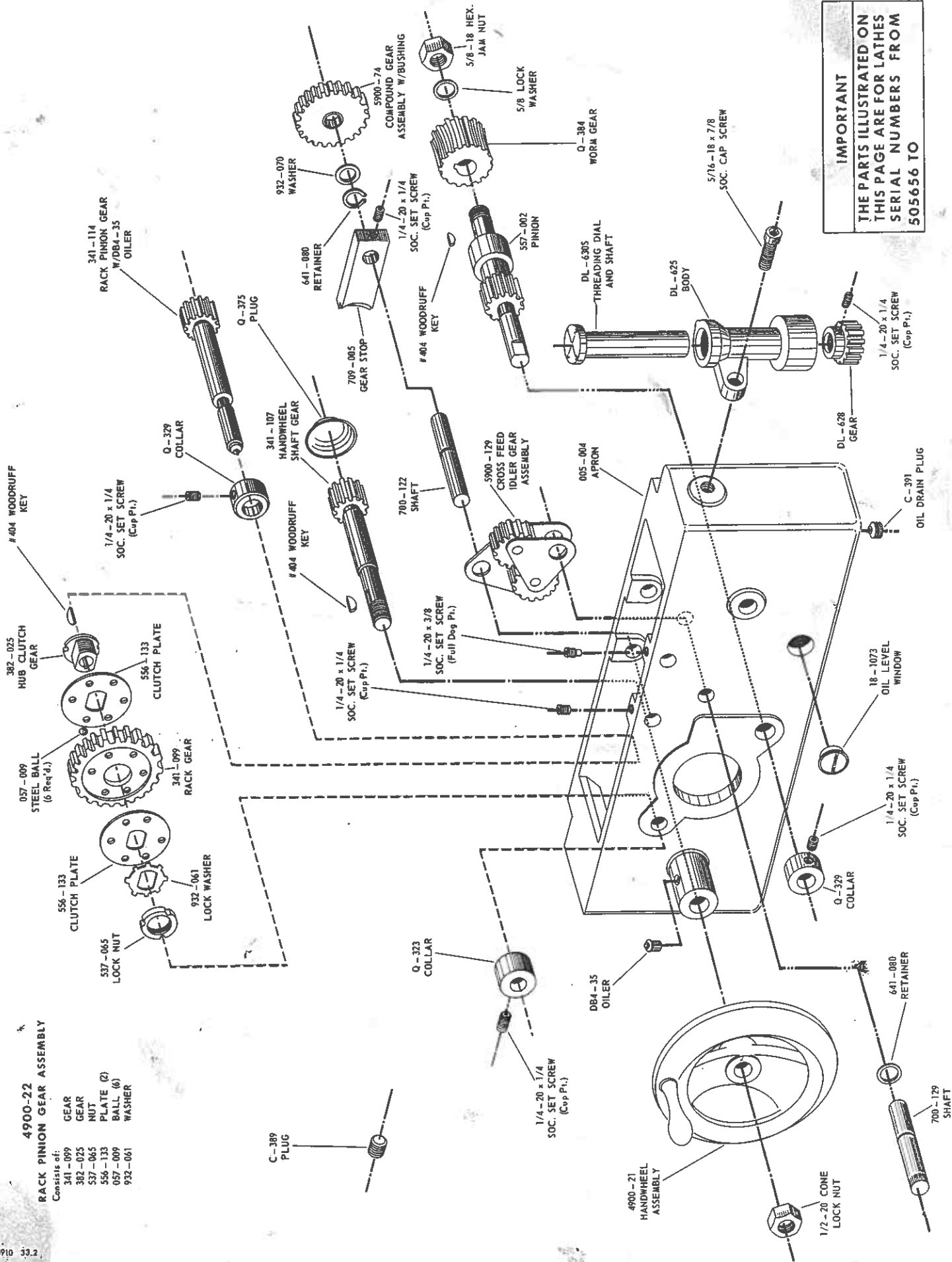
IMPORTANT
 THE PARTS ILLUSTRATED ON
 THIS PAGE ARE FOR LATHES
 SERIAL NUMBERS FROM
 505656 TO

APRON ASSEMBLY
5900-1000
 INCLUDES PAGE 33

4900-22
RACK PINION GEAR ASSEMBLY

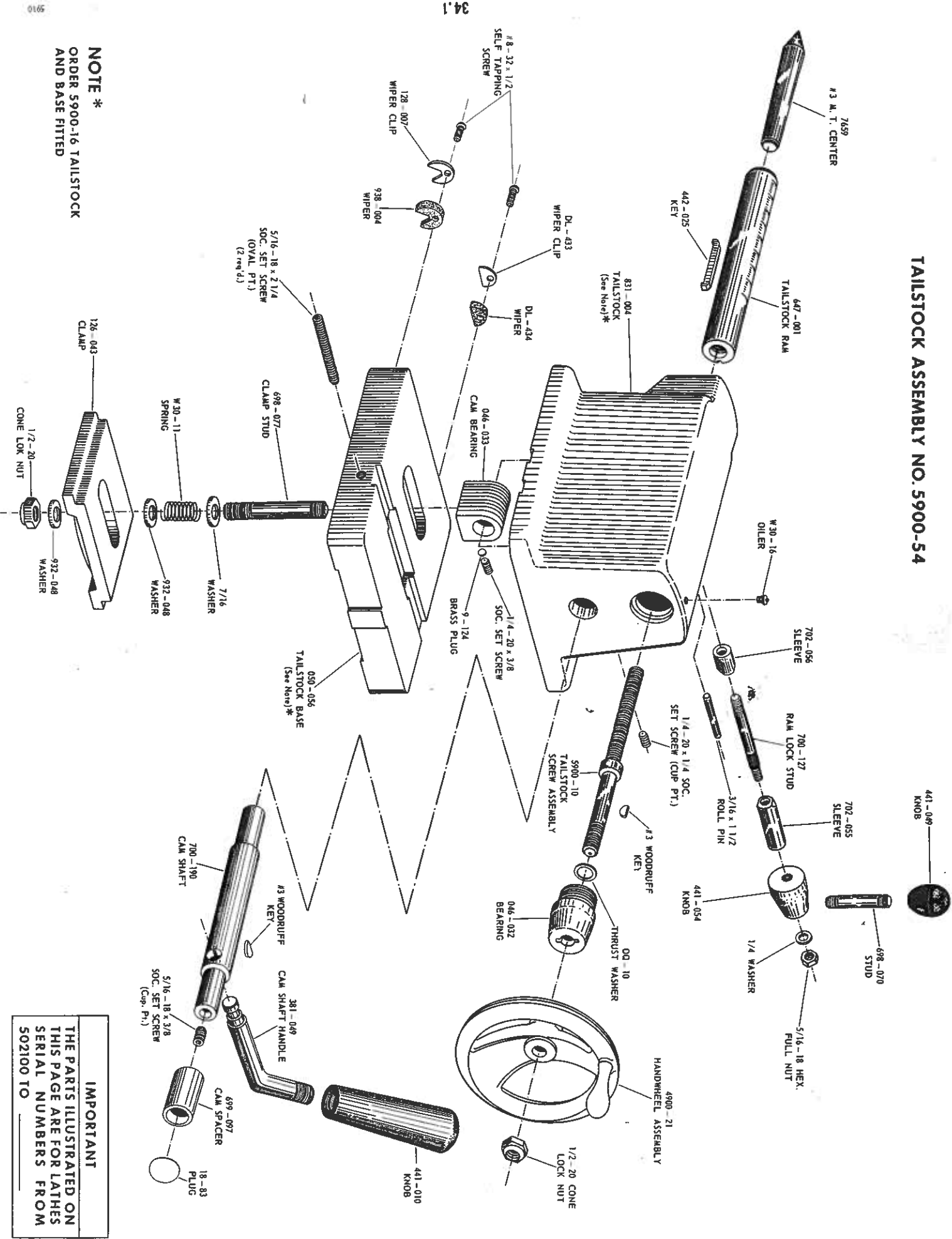
Consists of:

- 341-099 GEAR
- 382-025 GEAR
- 537-065 NUT
- 556-133 PLATE (2)
- 057-009 BALL (6)
- 932-061 WASHER



IMPORTANT
 THE PARTS ILLUSTRATED ON
 THIS PAGE ARE FOR LATHES
 SERIAL NUMBERS FROM
 505656 TO

TAILSTOCK ASSEMBLY NO. 5900-54



34.1

NOTE *
ORDER 5900-16 TAILSTOCK AND BASE FITTED

IMPORTANT
THE PARTS ILLUSTRATED ON THIS PAGE ARE FOR LATHES SERIAL NUMBERS FROM 502100 TO _____