

**Miniature Brass Body Tank Relief Valve
Compressed Air Service
1/8" and 1/4" PTF Port Sizes**

- Used in low-volume air tanks to retard excessive pressure buildup
- If pressure exceeds the relief pressure setting, the valve opens and air from the tank is vented to atmosphere. Valve closes when pressure is reduced to the relief pressure setting.
- Compact design, corrosion resistant construction
- Constructed of brass and stainless steel for compressed air and water service
- Available with adjustable or non-adjustable, factory preset, relief pressure setting


Ordering information

Port Size	Model Numbers - Relief Pressure Adjustment Ranges *				Weight lbs (kg)
	25 to 50 psig (1.7 to 3.5 bar)	25 to 75 psig (1.7 to 5.2 bar)	70 to 150 psig (5 to 10.4 bar)	125 to 300 psig (8.6 to 20.7 bar)	
1/8"	16-004-001	16-004-002	16-004-003	16-004-004	0.11 (0.05)
1/4"	16-004-009	16-004-010	16-004-011	16-004-012	0.11 (0.05)

Alternative Models

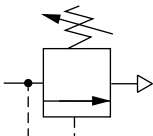
1 6 - 0 0 4 - ★ ★ ★ - ★ ★ ★ ★

Factory set, non adjustable pressure	Add **
Locktite adjusting cap	Z

Factory Set Relief Pressure Setting	Add **
Insert desired relief pressure setting in psig	025 through 300

* Relief valves can be adjusted to pressures in excess of, and less than, those specified. Do not use these units to control pressures outside of the specified ranges.

** Example: 16-004-001-**Z025**
Locking method: Locktite cap
Relief pressure setting: 25 psig

ISO Symbol


See Section ALE-24 for Accessories



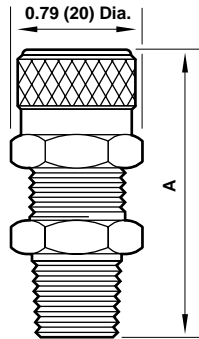
Technical Data

Fluid: Compressed air and water
 Maximum pressure: 300 psig (20 bar)
 Operating temperature*: -30° to 200°F (-34° to 93°C)
 *Air supply must be dry enough to avoid ice formation at temperatures below 35°F (2°C).
 Repeatability: ± 20% of relief pressure setting

Materials

- Body, cap, springrest: Brass
- Valve: Brass and nitrile
- Regulating spring: Stainless steel

All Dimensions in Inches (mm)



A: 1.56 (62) for 1/8" pipe size
 1.75 (44) for 1/4" pipe size

Typical Performance Characteristics

