

Reading User Code from a Robot Controller

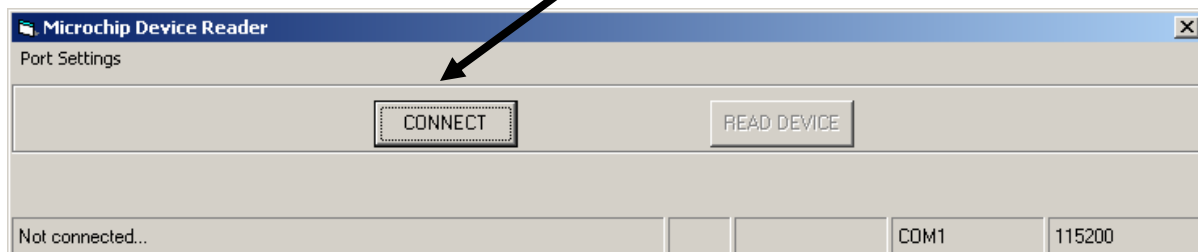
This document shows how to retrieve code from a robot controller in order to be able to re-load it at a later time. After the read is complete, a file called “DEMICEMEN.BIN” is saved. This file contains the complete code (32K) that was loaded into flash memory. The following steps must be taken in order to read the flash memory correctly:

Step 1:

Install the Microchip device reader/writer program (by double clicking on the setup.exe program in the zip file).

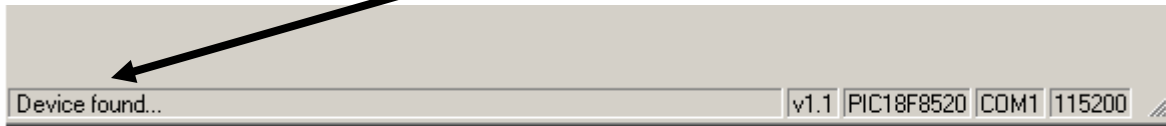
Step 2:

Execute the ‘Device Reader’ program. Be sure DB9 cable is connected from your PC to your RC and press the ‘PROG’ button on the RC. Once you verify that the ‘Program State’ LED is solid yellow, click on the ‘CONNECT’ button.



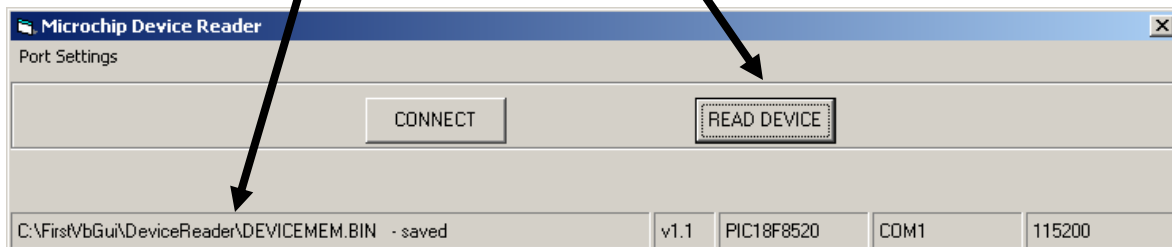
Step 3:

Verify that the status bar displays “Device found ...”



Step 4:

Click on the ‘READ DEVICE’ button and verify that the ‘DEVICEMEM.BIN’ file has been saved..



The ‘DEVICEMEM.BIN’ may be re-loaded using the IFI Loader. Be sure to note the location of this file. The ‘Program State’ LED will remain solid yellow until the reset button is pressed on the RC.