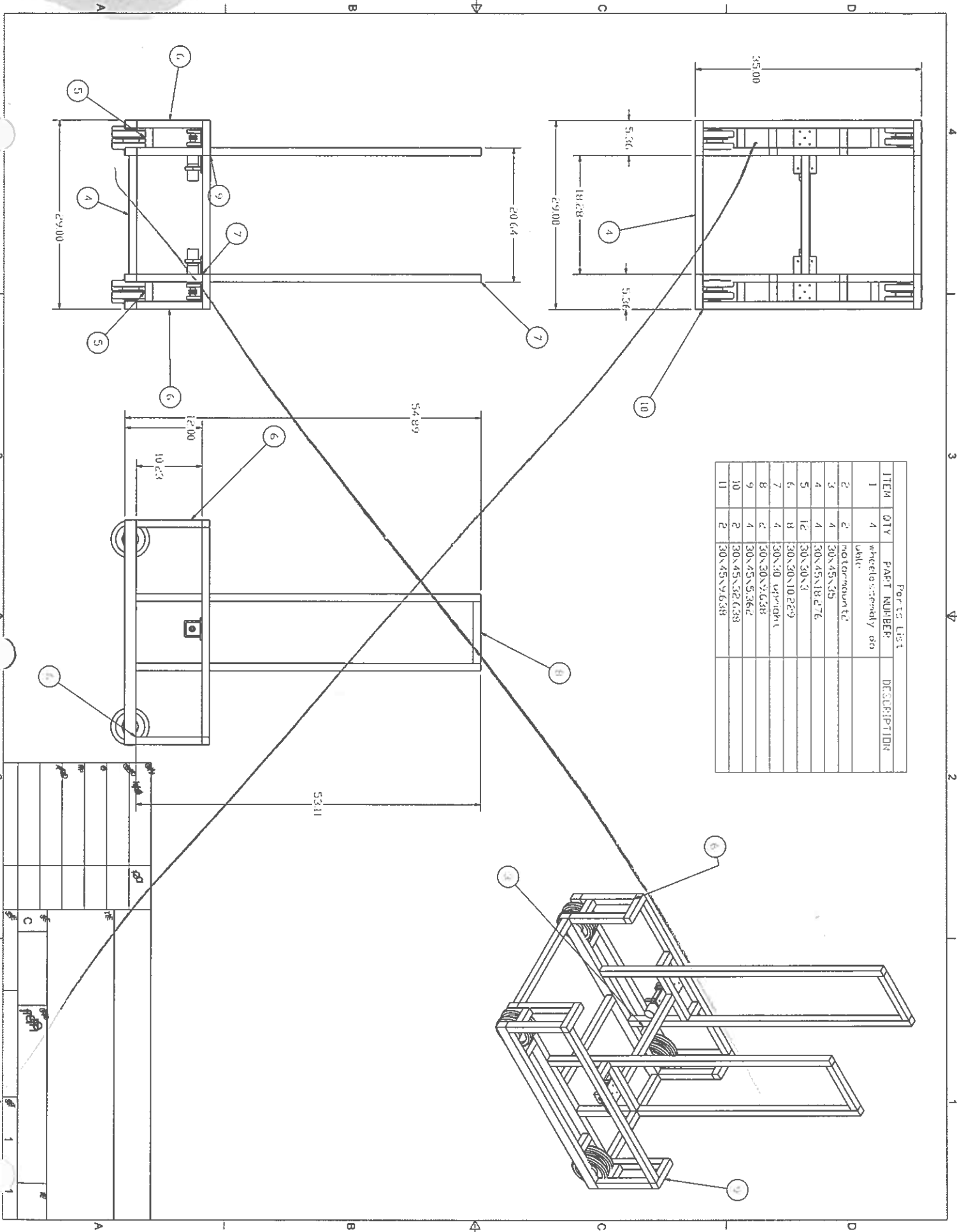
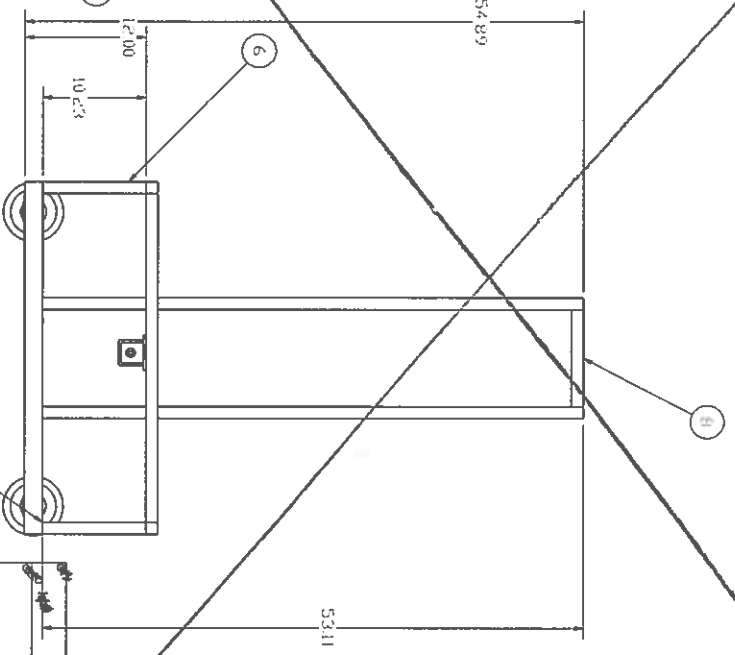
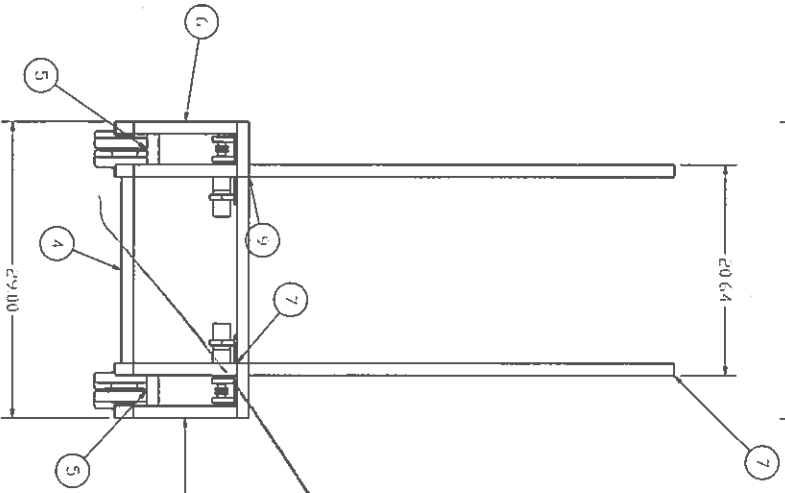
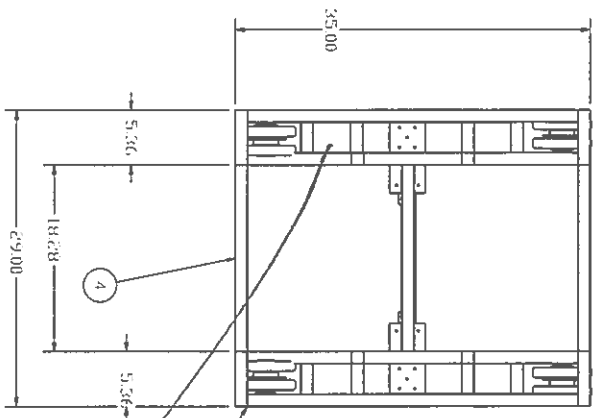
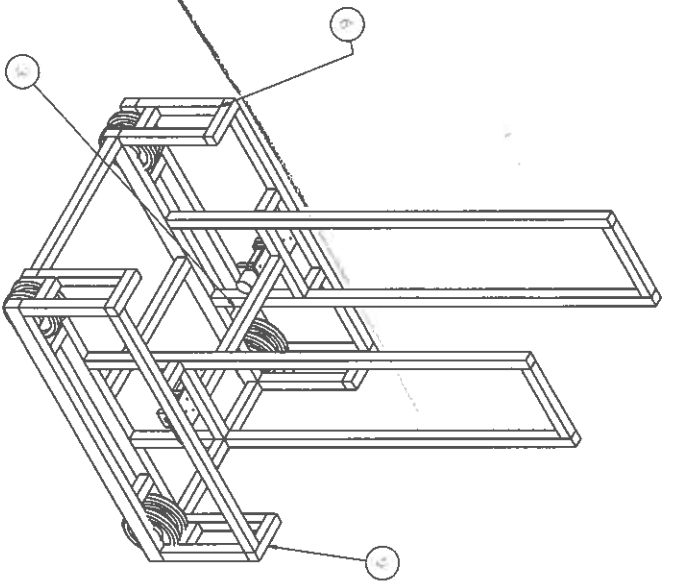


Parts List

ITEM	QTY	PART NUMBER	DESCRIPTION
1	4	wheel assembly on axle	
2	2	motor mount	
3	4	30x45x35	
4	4	30x45x18 276	
5	12	30x30x3	
6	8	30x30x10 229	
7	4	30x30 upright	
8	2	30x30x9 638	
9	4	30x45x5.362	
10	2	30x45x32 638	
11	2	30x45x9 638	



ITEM	QTY	PART NUMBER	DESCRIPTION
1	4	wheel assembly on axle	
2	2	motor mount	
3	4	30x45x35	
4	4	30x45x18 276	
5	12	30x30x3	
6	8	30x30x10 229	
7	4	30x30 upright	
8	2	30x30x9 638	
9	4	30x45x5.362	
10	2	30x45x32 638	
11	2	30x45x9 638	

Goods receipt list

Order: 1101603
 Start Date: 01/22/2001
 Material: 13012472 MISC.MACHINING SMS PROTO-TYPES
 ProdSchedulr: US0
 Order Priority: 3 SA Nr.:
 Customer order: 20432668 / 000010
 Customer-No/Name/City: 20315999 FESTO CORPORATION 11788 HAUPPAUGE
 Customer order quant.: 50.000 PC
 Customer request data: 01/22/2001
 Project Number:

Attn: Rob Schall - Cut list for Bosch
 Material for FIRST Competition

Qty	Length(inches)	Stock : 30mm x 30mm	Priority
2	32.638 "frame"	1	1
8	10.229 "frame"	1	1
4	9.638 "frame"	1	1
4	5.362 "frame"	1	1
8	3.000 "frame"	1	1
4	18.276 "tower"	2	2
4	53.114 "tower"	2	2
2	25.000 "arm"	3	3

Optimize Cut frame parts first , Tower parts second , Arm parts third.
 Please maintain same tolerance's as when cutting cylinder barrels.
 Please try to have parts completed by 2pm Tuesday 1/23/01

This order was entered by D. Davies for Rich Day / FIRST Competition



1101603

Product: Material no. Date Stglc Recvd qty Un
 13012472 MISC.MACHINING SMS PROTO-TYPES 50.000 PC

Goods receipt list

Order: 1101603
 Start Date: 01/22/2001
 Material: 13012472 MISC.MACHINING SMS PROTO-TYPES
 ProdSchdulr: US0
 Order Priority: 3 SA Nr.:
 Customer order: 20432668 / 000010
 Customer-No/Name/City: 20315999 FESTO CORPORATION 11788 HAUPPAUGE
 Customer order quant.: 50.000 PC
 Customer request data: 01/22/2001
 Project Number:

Attn: Rob Schall - Cut list for Bosch
 Material for FIRST Competition

Qty	Length(inches)	Priority	Stock : 30mm x 30mm
2	32.638 "frame" 829.00	1	
8	10.229 "frame" 954.8	1	
4	9.638 "frame" 244.8	1	
4	5.362 "frame" 136.2	1	
8	3.000 "frame" 76.2	1	
4	18.276 "tower" 464.2	2	
4	53.114 "tower" 1344.1	2	
2	25.000 "arm" 635.0	3	→ fkt

Qty	Length(inches)	Priority	Stock : 30mm x 45mm
4	35.000 "frame" 884.0	1	
2	18.276 "frame" 464.2	1	
2	9.638 "frame" 244.8	1	
4	3.000 "frame" 76.2	1	
2	34.000 "arm" 863.6	3	

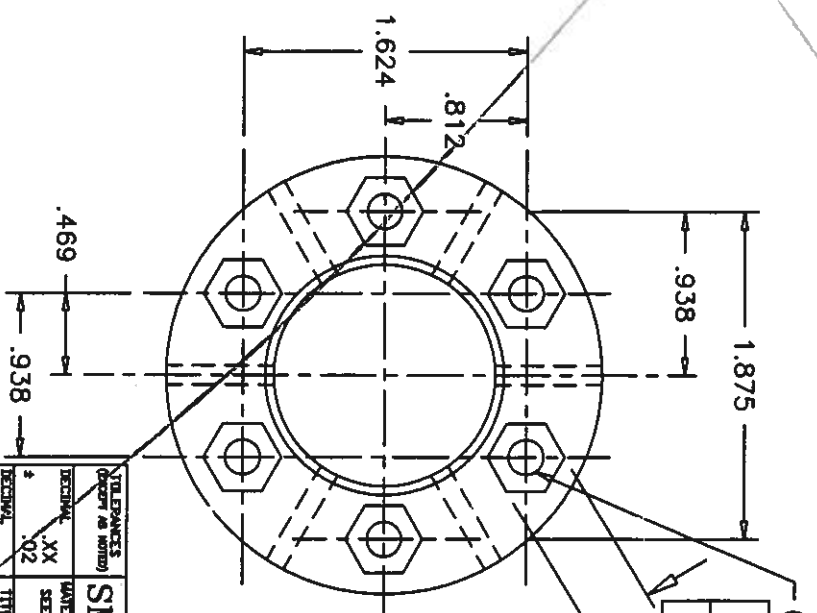
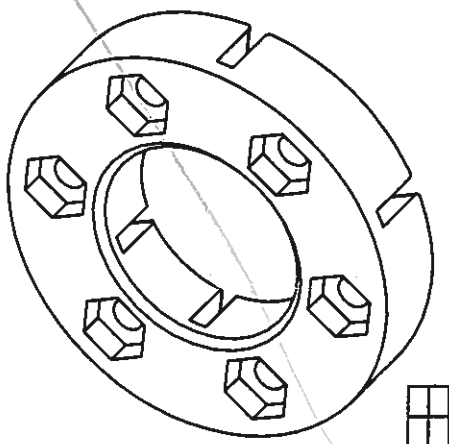
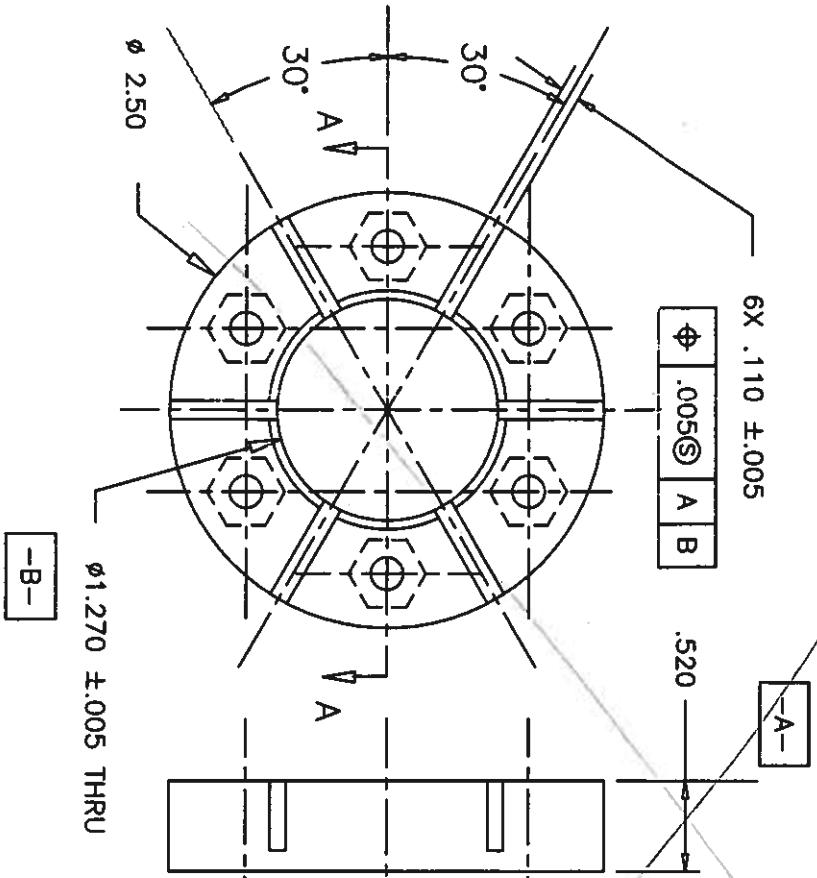
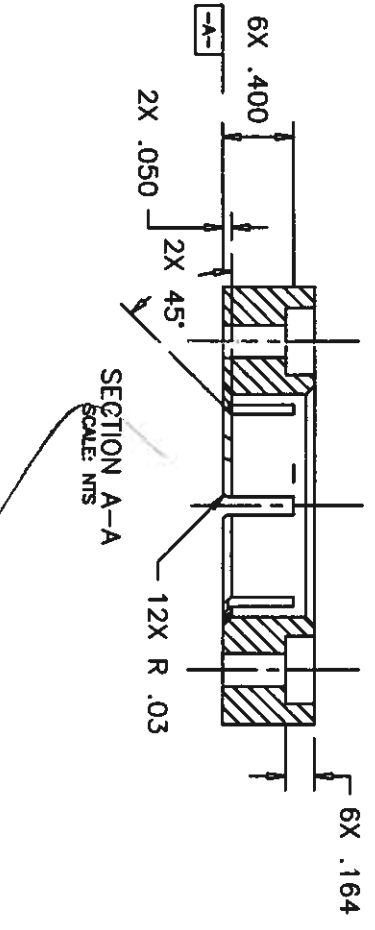
Optimize Cut frame parts first , Tower parts second , Arm parts third.
 Please maintain same tolerance's as when cutting cylinder barrels.
 Please try to have parts completed by 2pm Tuesday 1/23/01

This order was entered by D. Davies for Rich Day / FIRST Competition



1101603

Product: Material no. Date StgC Recvd qty Un
 13012472 MISC.MACHINING SMS PROTO-TYPES 50.000 PC



6X .385 HEX
SEE SECTION A-A
FOR DEPTH

Φ .005 (S) A C

6X Ø.200 ±.005 THRU

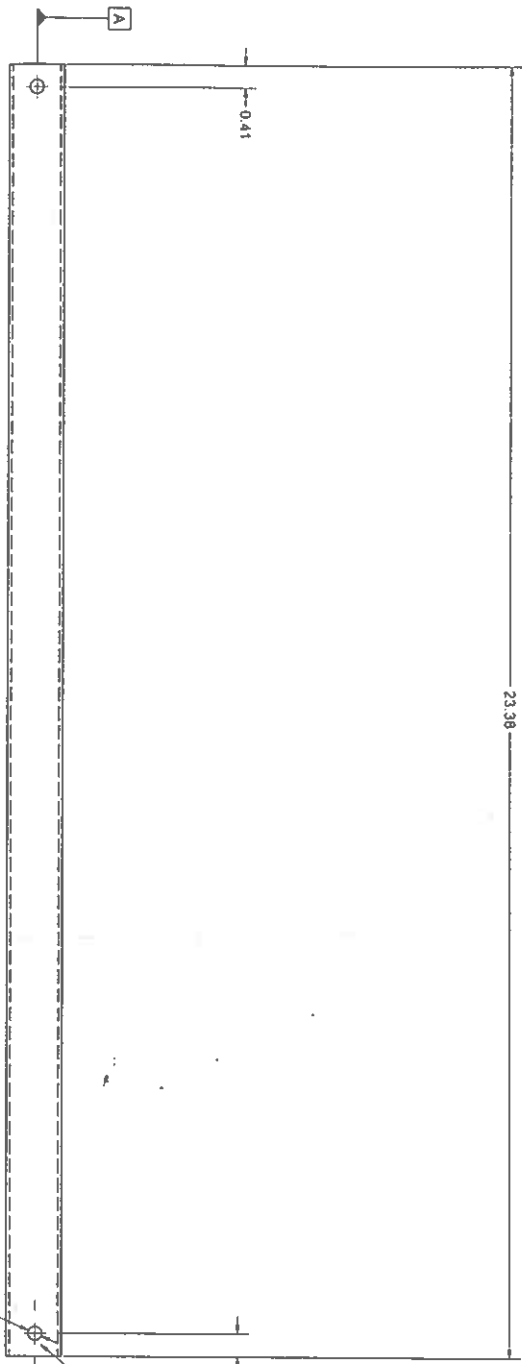
Φ Ø.006 (S) A B

-C-

DATE	REV.	BY	CHKD.

TOLERANCES (UNLESS OTHERWISE SPECIFIED)			
DECIMAL	FRACTIONAL	SCALE	APPROVED BY
.XX	XX	NTS	ED MARTINEZ
.XXX	.XXX	NTS	APPROVED BY
.005	.005		
TITLE		HUB	
DATE		DRAWING NUMBER	
9/8/00			

SMALL PARTS, INC.



$\phi 0.250$ Drill after pressing in Aluminum plugs flush with end of shaft
Both ends

Holes on each end must be located with 0.2 degrees polar

Protemend
from
SR:

1" OD x .063 wall
TUBING
USC
from
parts
small

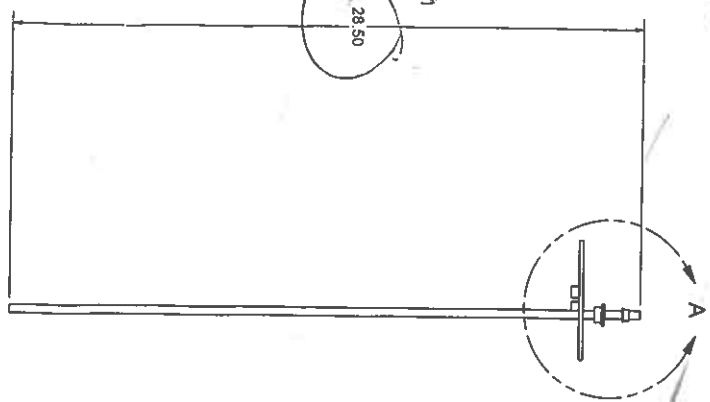
1" OD x .063 wall
STZ TUBING.
(Take at school?)
2/13/01

DESIGNER	Checked	2/9/01	TITLE	
CHECKED				
QA				
MFG				
APPROVED				
SIZE	C	DWG NO	main shaft	REV
SCALE				
SHEET	1	OF	1	

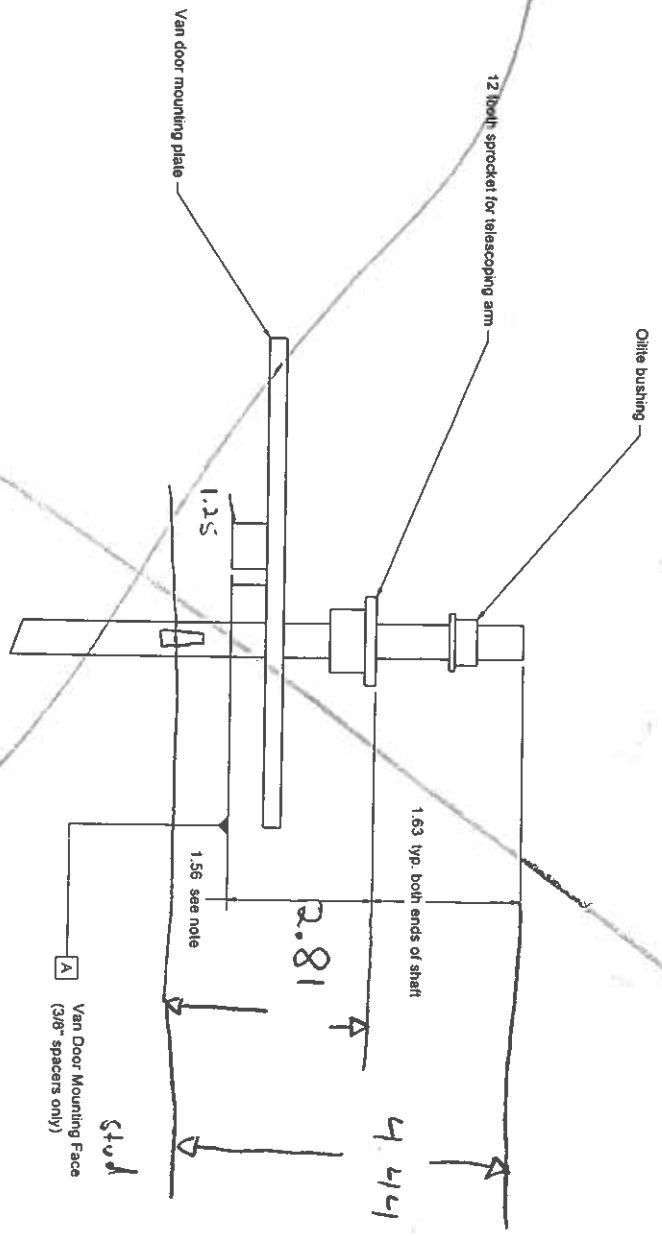
250
731

Cut to length

28.50



Drawings > Clinic
 Just cut to
 28.50 length -



Detail A
 Scale 1 : 1

Note: increase this dimension by length of spacers used.

Cut to length only

DRWING	hickman	2/20/01	TITLE
CHECKED			
QA			
WRS			
APPROVED			
SIZE	C	DWG NO	REV
SCALE	1	SHEET	1 of 1

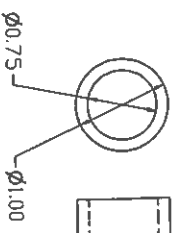
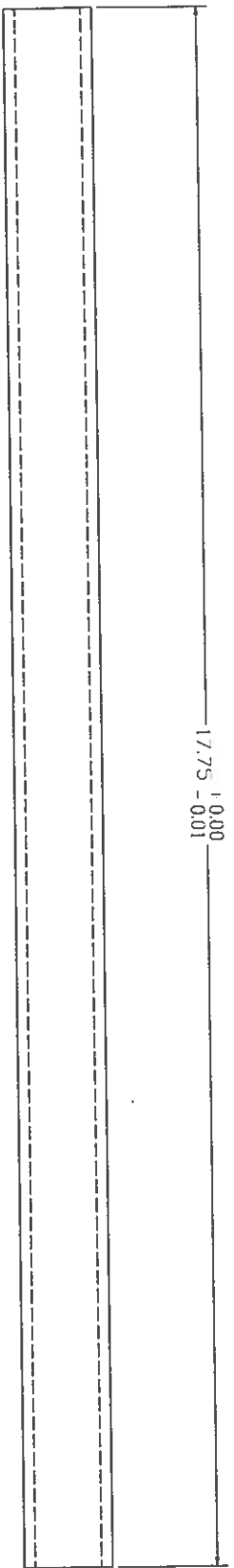
If questions, call Bob Drexel.
631-435-0800

1P<S
ALU

1" Alum Pl.

OK

17.75 1.000
-0.01



Start to length.

2-8-01

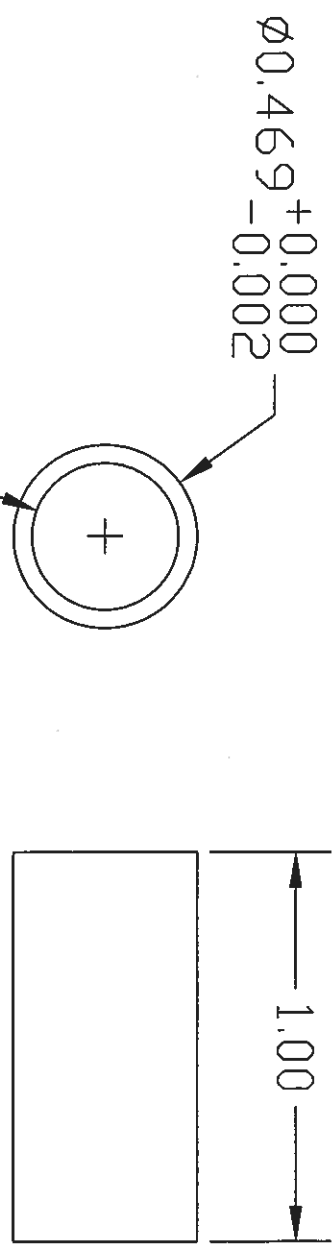
DESIGNER	Hydrexel	2/8/01	TITLE	Class - 1	SCALE	SHEET	1	OF	1
CHECKED									
DATE									
APPROVED									
			SIZE		ORIG. NO.		REV		
			C						

the
(A/B) done
2-10-01

REVISIONS			
REV	DESCRIPTION	DATE	DRAWN

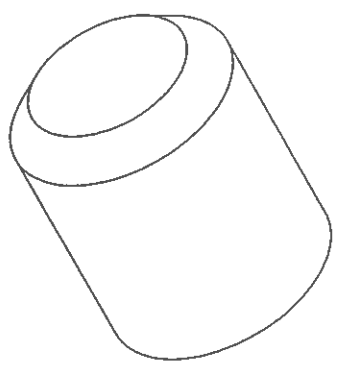
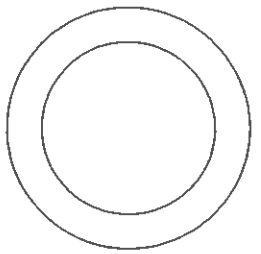
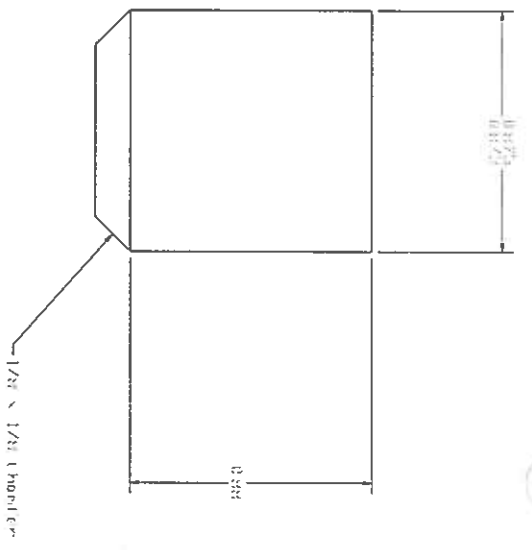
19c3

*delivered
Production*



Steel from kit

UNLESS OTHERWISE SPECIFIED DIMENSIONS ARE IN INCHES		MATERIAL:		TITLE:		DESCRIPTION		BILL OF MATERIAL	
TOLERANCE ON DIMENSIONS:		FINISH:		shaft spacer					
.XX±	0.02								
.XXX±	0.010								
.XXXX±	0.005								
FRACTIONS ± 1/64									
ANGLES ± 1/2°									
DO NOT SCALE DRAWING									
DRAWN		DATE		SIZE		DRAWING NO.		REV	
CHECKED		DATE		A					
ENGINEER		DATE		SCALE:		FILE NAME:		SHEET	
END00001 REV B								OF	
<p>FESTO 395 MORELAND ROAD HAUPPAUGE, N.Y. 11788 (516) 435-0800</p>					<p>This document is PROPRIETARY to Festo Corporation and its contents may not be disseminated to anyone outside your organization or within your organization who does not have need to know its contents</p>				



2 Req'd

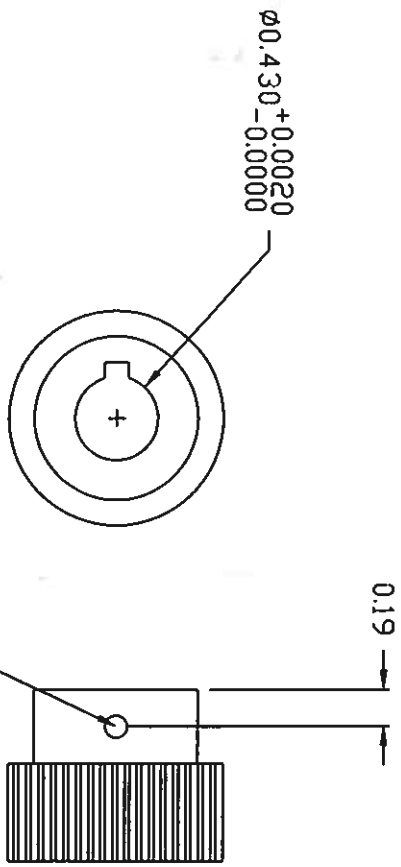
1" ALUM PL

2-13-01

DRAWN		2/8/01	
CHECKED			
QA			
ING			
APPROVED			
TITLE		SIZE	DWG NO.
		C	main shaft plug
SCALE			REV
1			
SHEET 1		OF 1	

REVISIONS		DATE	DRAWN
REV	DESCRIPTION		

June 3/15/01



Remark Small part
Gear from
 2/14/01

UNLESS OTHERWISE SPECIFIED DIMENSIONS ARE IN INCHES

TOLERANCE ON DIMENSIONS:
 .X± 0.02
 .XX± 0.010
 .XXX± 0.005
 FRACTIONS ± 1/64
 ANGLES ± 1/2°

MATERIAL:

FINISH:

DRAWN: DATE

CHECKED: DATE

ENGINEER: DATE

END00000 REV 8

DO NOT SCALE DRAWING

TITLE: 20 TOOTH 14.5 DEG PRESSURE ANG DRIVE GEAR

ITEM QTY PART NUMBER

DESCRIPTION

SCALE: A

FILE NAME:

SHEET OF

REV

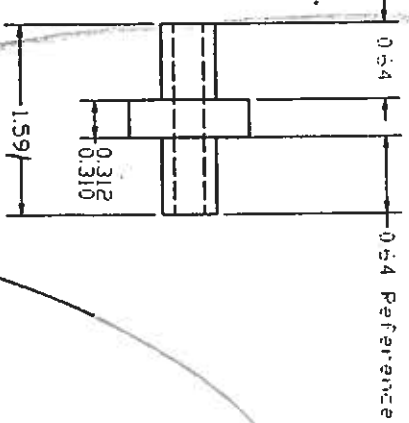
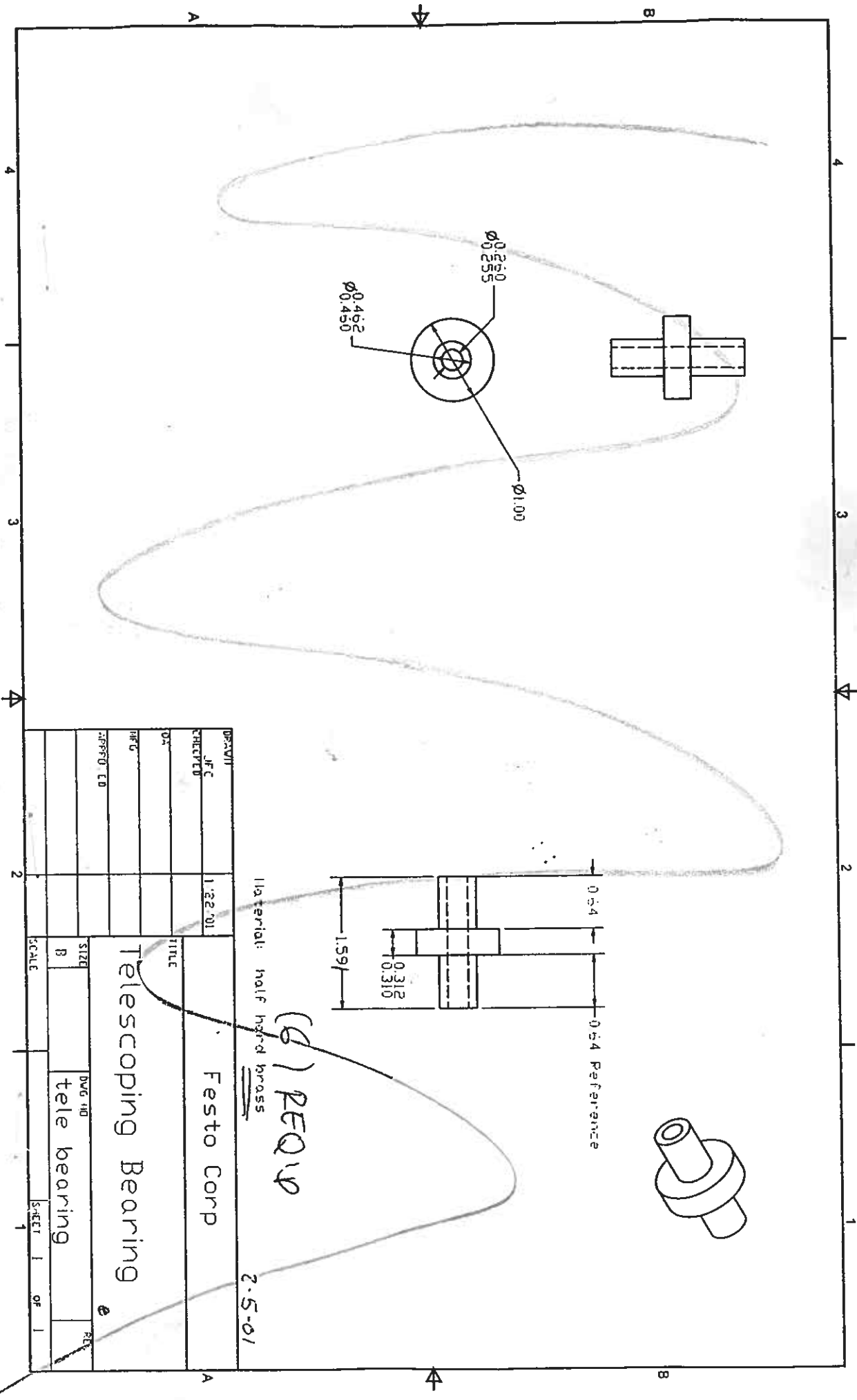
BILL OF MATERIAL

MATERIAL

395 MORELAND ROAD
 HAUPPAUGE, N.Y. 11788
 (516) 435-0800

PESTO

This document is PROPRIETARY to Festo Corporation and its contents may not be disseminated to anyone outside your organization or within your organization who does not have need to know its contents



Material: half hard brass

(6) REQD

2-5-01

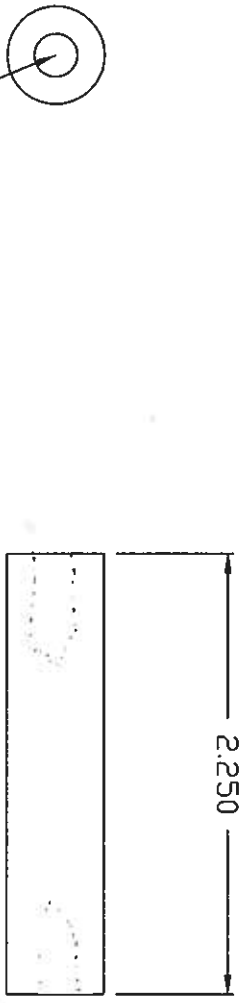
DRAWN	JFC	1-22-01	Festo Corp	
CHECKED			Telescoping Bearing	
TITLE			DWG NO	tele bearing
DATE			SIZE	B
APP'D			SCALE	1
APPROVED			SHEET	1 OF 1

Flynn

Serial 1
Festo

4 pcs Aluminum

REVISIONS		
REV	DESCRIPTION	DATE



DRILL & TAP M6 1/2' DEEP

1/2 ALUM RL

2-15-01

UNLESS OTHERWISE SPECIFIED DIMENSIONS ARE IN INCHES

TOLERANCE ON DIMENSIONS:

.XX ± 0.02

.XXX ± 0.010

.XXXX ± 0.005

FRACTIONS ± 1/64

ANGLES ± 1/2°

MATERIAL:

FINISH:

DRAWN DATE

CHECKED DATE

ENGINEER DATE

EMB00001 REV B

DO NOT SCALE DRAWING

ITEM QTY PART NUMBER

DESCRIPTION

BILL OF MATERIAL

MATERIAL

TITLE:

ARM GEAR BOX STANDOFF

SIZE A

DRAWING NO.

SCALE:

FILE NAME:

SHEET OF

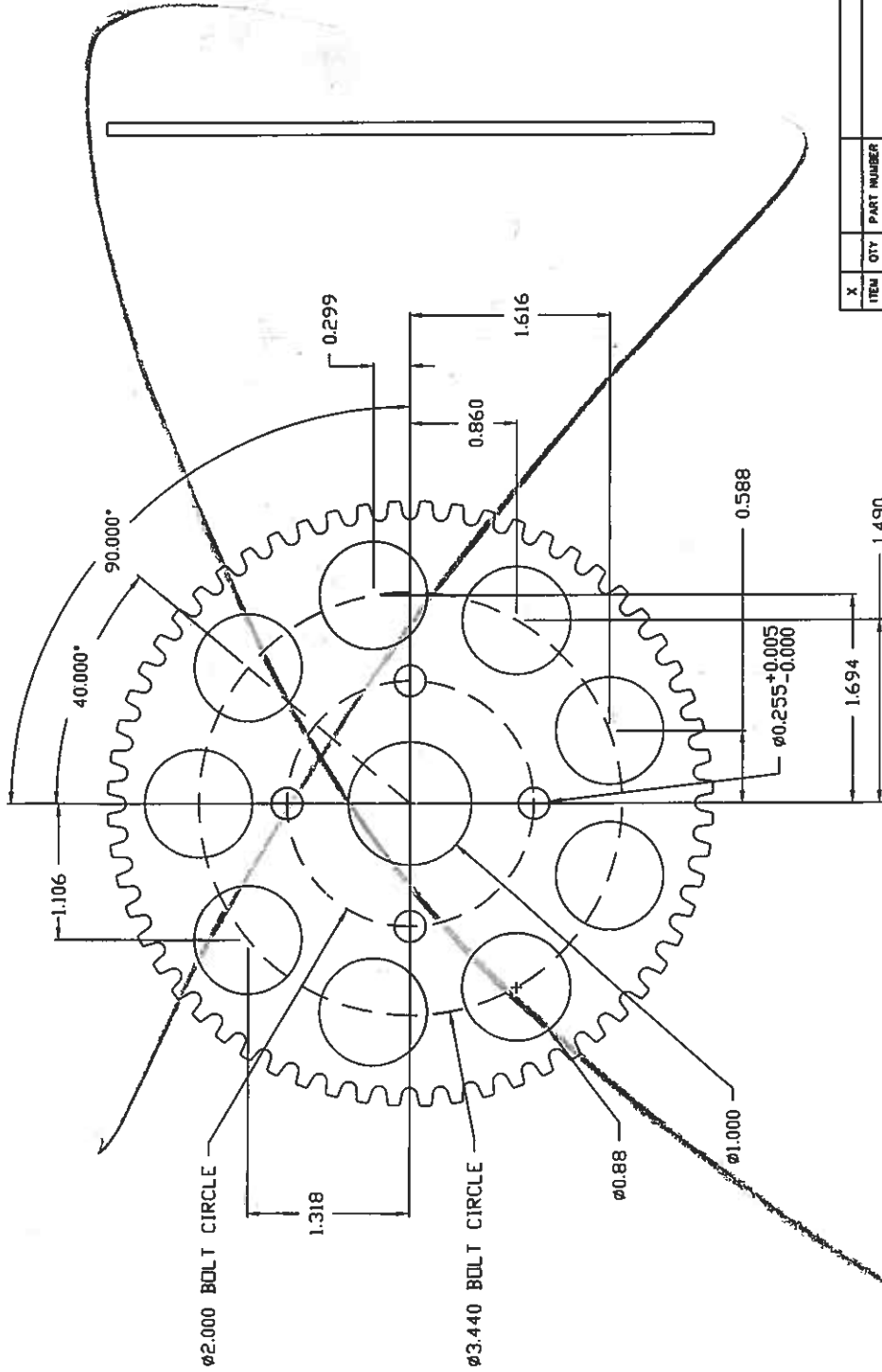
REV

395 MORELAND ROAD
HAUPPAUGE, N.Y. 11788
(516) 435-0800

FESTO

This document is PROPRIETARY to Festo Corporation and its contents may not be disseminated to anyone outside your organization or within your organization who does not have need to know its contents

REVISIONS		DATE	DRAWN
REV	DESCRIPTION		BD



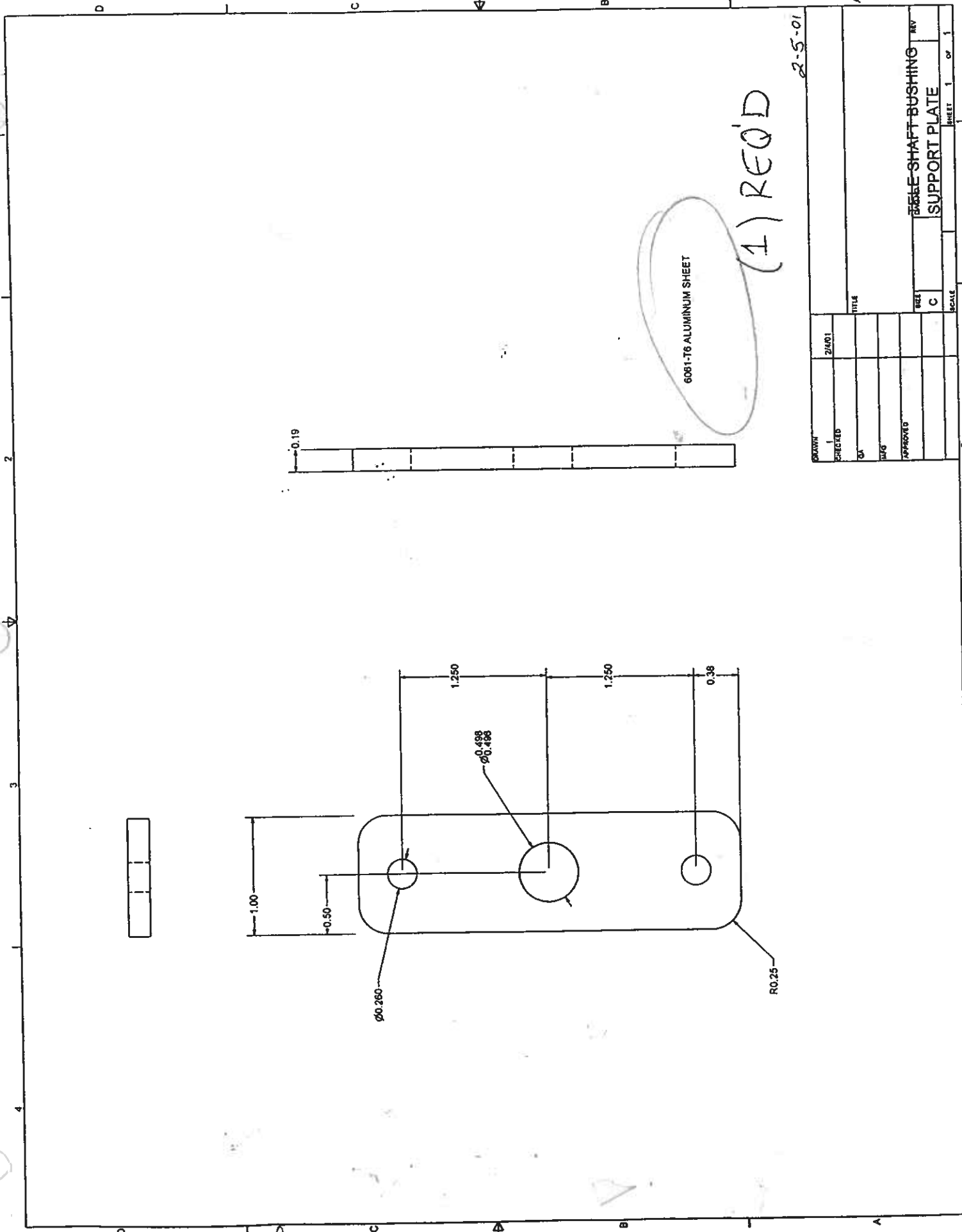
X	ITEM	QTY	PART NUMBER	DESCRIPTION	MATERIAL
				60 TOOTH SPROCKET	
TITLE: 60 TOOTH SPROCKET					
BILL OF MATERIAL					
REV	DATE	DESCRIPTION	REV	DATE	DESCRIPTION
SCALE	FILE NAME	DRAWING NO.	SIZE	REV	SHEET OF
DO NOT SCALE DRAWING		B			

FESTO
 395 MORELAND ROAD
 HAUPPAUGE, N.Y. 11788
 (516) 435-0800

This document is PROPRIETARY to Festo Corporation and its contents may not be disseminated to anyone outside the organization without the prior written permission of Festo Corporation. If you are not an employee of Festo Corporation, you should not have received this document. If you have received this document, you should not have need to expose its contents.

UNLESS OTHERWISE SPECIFIED DIMENSIONS ARE IN INCHES:	
TOLERANCE ON DIMENSIONS:	
.X±	0.02
.XX±	0.010
.XXX±	0.005
FRACTIONS ± 1/64	
ANGLES ± 1/2°	

Fraser



6061-T6 ALUMINUM SHEET

(1) REQ'D

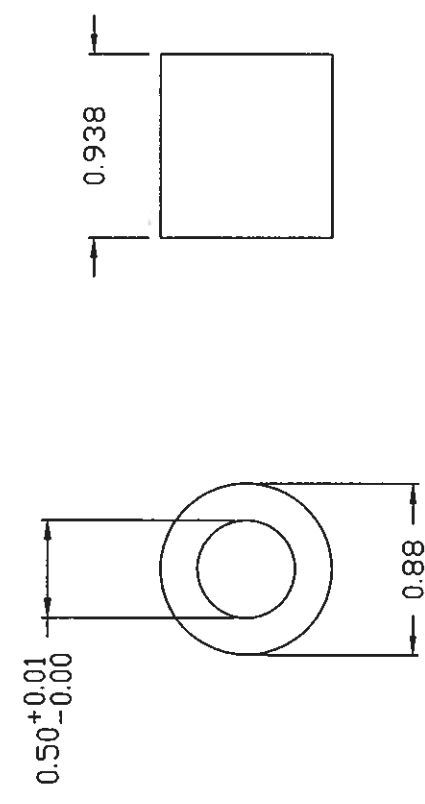
2-5-01

DESIGNED	2/4/01	TITLE	
CHKD			
DWG			
APPROVED			
		SHEET	1 OF 1
		SCALE	

BASE SHAFT-BUSHING
SUPPORT PLATE

1pc plastic / Aluminum
 (Delrin/Nylon/etc)

flex shaft spacer



REVISIONS		
REV	DESCRIPTION	DATE

2-15-01

ITEM	QTY	PART NUMBER	DESCRIPTION	MATERIAL

TITLE: **ARM GEAR BOX SPACER
IDLER SHAFT LARGE**

MATERIAL: **FESTO**
 395 MORELAND ROAD
 HAUPPAUGE, N.Y. 11788
 (516) 435-0800

SCALE: **A** DRAWING NO. REV

FILE NAME: SHEET OF

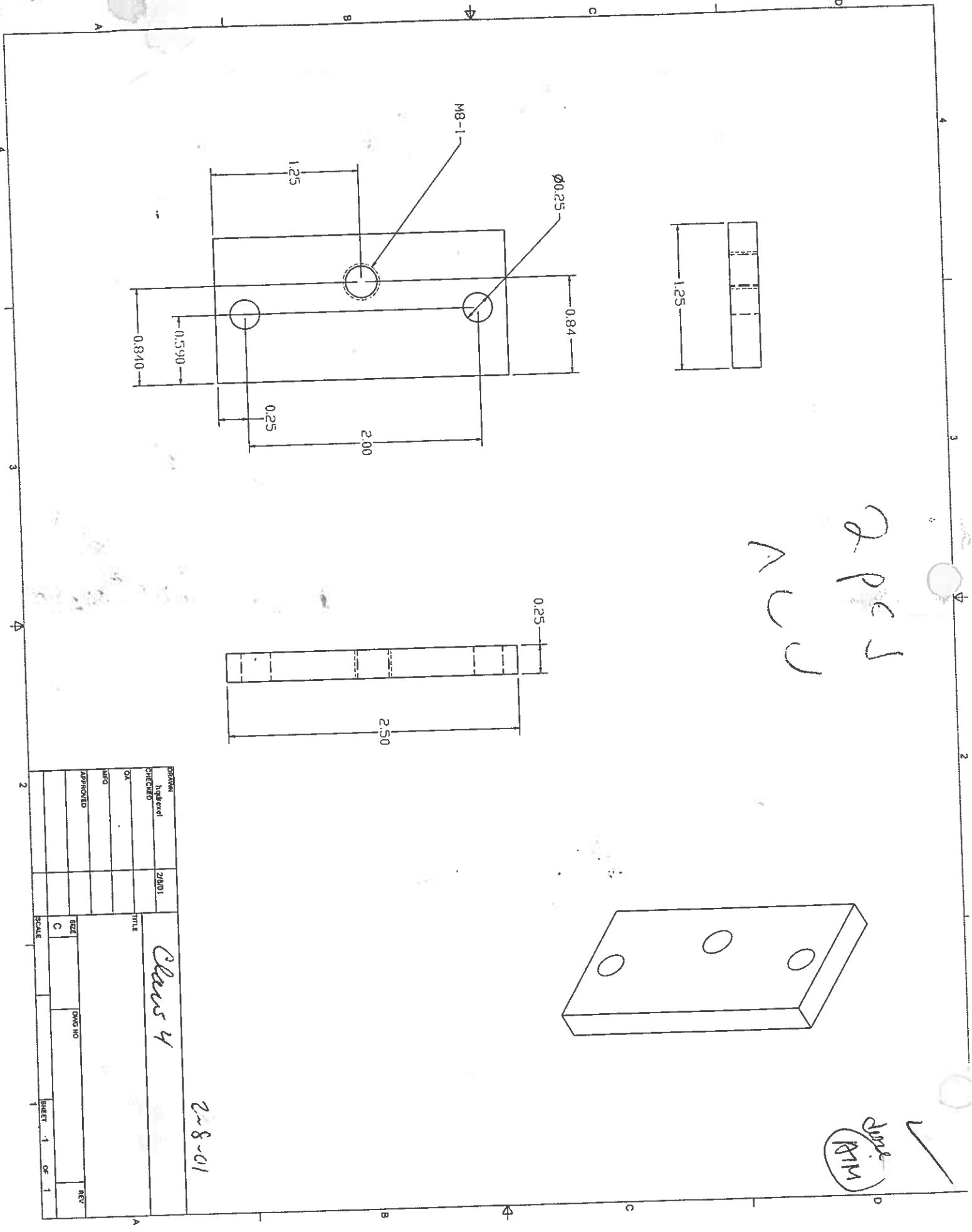
UNLESS OTHERWISE SPECIFIED DIMENSIONS ARE IN INCHES

TOLERANCE ON DIMENSIONS:
 .X± 0.02
 .XX± 0.010
 .XXX± 0.005

FRACTIONS ± 1/64
 ANGLES ± 1/2°

DO NOT SCALE DRAWING

This document is PROPRIETARY to Festo Corporation and its contents may not be disseminated to anyone outside your organization or within your organization who does not have need to know its contents



2 pcs
ACU

✓
S. RIM

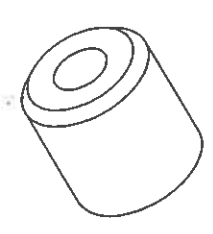
2-8-01

DRAWN	INDEXED	Z/R/01	TITLE	
CHECKED			Class 4	
QA			SIZE	ORIG NO
APPROVED			C	
			SCALE	SHEET 1 OF 1
				REV

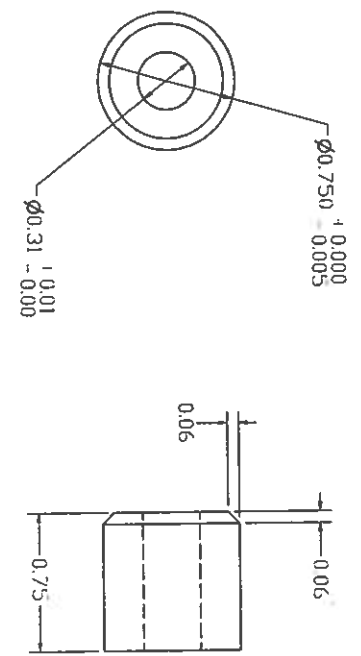
2 pcs

Brass

AM

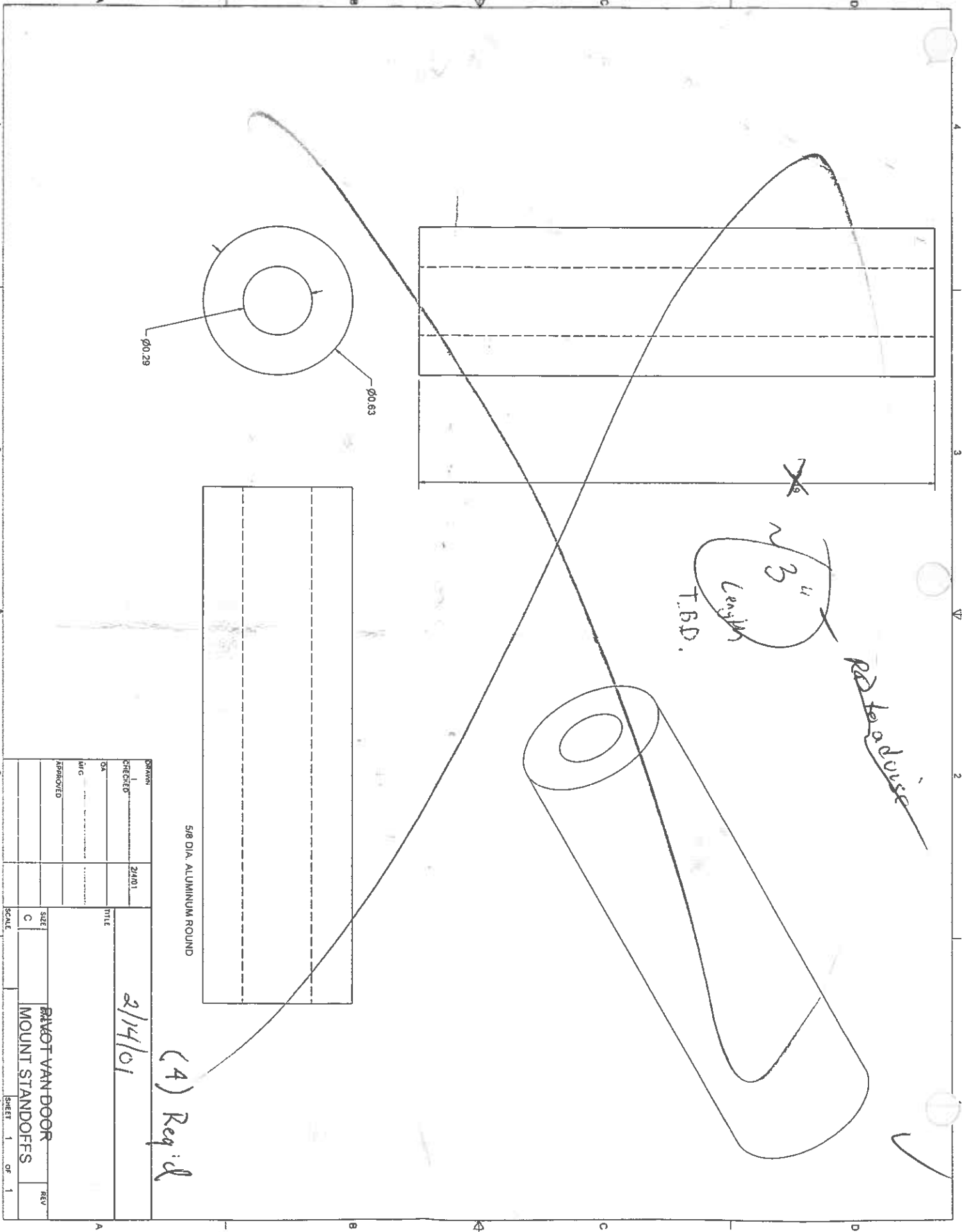


Brass pin
small part



DRAWN	hydroxyl	21001	TITLE	
CHECKED			Clamp 5	
DATE			SIZE	OWG NO
APPROVED			C	clamp pivot pin
			SCALE	REV
			1	1

2-8-01



Handwritten notes:
 ~ 3" Length T.B.D.
 RD for advise

Handwritten note:
 (4) Req'd

5/8 DIA. ALUMINUM ROUND

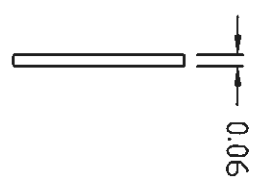
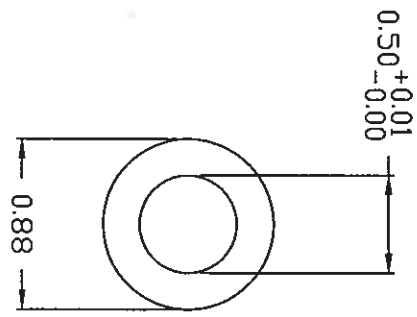
DRAWN		2/14/01	
CHECKED			
QA			
MFG			
ASSEMBLED			
SCALE		C	
TITLE		PIVOT VAN DOOR MOUNT STANDOFFS	
REV		1	
SHEET		1 OF 1	

1 pcs

plastic of Aluminium
(Delrin, Nylon, etc)

Small parts

REVISIONS		DATE	DRAWN
REV	DESCRIPTION		



2-15-01

UNLESS OTHERWISE SPECIFIED DIMENSIONS ARE IN INCHES

TOLERANCE ON DIMENSIONS:

.XX ± 0.02

.XXX ± 0.010

.XXXX ± 0.005

FRACTIONS ± 1/64

ANGLES ± 1/2°

MATERIAL:

FINISH:

DRAWN _____ DATE _____

CHECKED _____ DATE _____

ENGINEER _____ DATE _____

END00001 REV B

DO NOT SCALE DRAWING

TITLE: ARM GEAR BOX SPACER IDLER SHAFT

ITEM QTY PART NUMBER DESCRIPTION

SCALE: A

SIZE A

DRAWING NO.

FILE NAME:

SHEET OF

REV

395 MORELAND ROAD
HAUPPAUGE, N.Y. 11788
(516) 435-0800

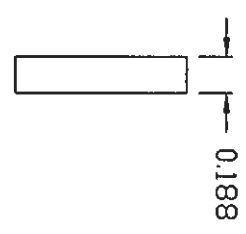
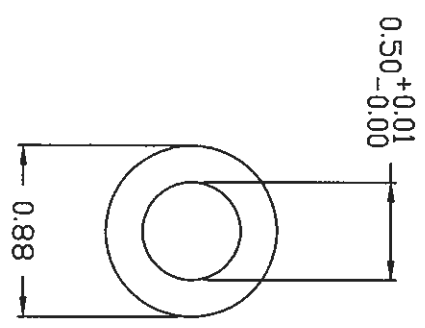
PESTO

This document is PROPRIETARY to Festo Corporation and its contents may not be disseminated to anyone outside your organization or within your organization who does not have need to know its contents

PROA

1 pcs Plastic / Aluminum
(Delrin, Nylon, etc)

Sketch parts



REVISIONS		
REV	DESCRIPTION	DATE

ITEM	QTY	PART NUMBER	DESCRIPTION	MATERIAL

BILL OF MATERIAL

2-15-01

UNLESS OTHERWISE SPECIFIED DIMENSIONS ARE IN INCHES

TOLERANCE ON DIMENSIONS:

.XX ± 0.02

.XXX ± 0.010

.XXXX ± 0.005

FRACTIONS ± 1/64

ANGLES ± 1/2°

MATERIAL:

FINISH:

DRAWN

CHECKED

ENGINEER

END000001 REV B

DO NOT SCALE DRAWING

TITLE:

ARM GEAR BOX SPACER
IDLER SHAFT LARGE

SIZE

SCALE:

A

DRAWING NO.

FILE NAME:

SHEET

OF

REV

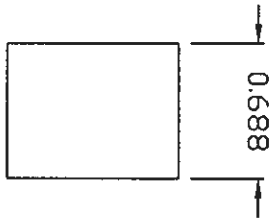
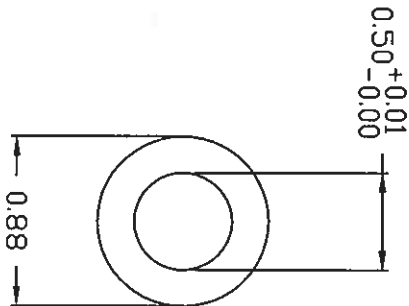
FESTO
395 MORELAND ROAD
HAUPPAUGE, N.Y. 11788
(516) 435-0800

This document is PROPRIETARY to Festo Corporation and its contents may not be disseminated to anyone outside your organization or within your organization who does not have need to know its contents

PROA

1 pcs Plastic / Aluminum
 (Delrin / Nylon / etc)

Small parts



REV	DESCRIPTION	DATE	DRAWN

2-15-01

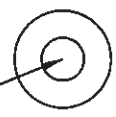
UNLESS OTHERWISE SPECIFIED DIMENSIONS ARE IN INCHES		MATERIAL:		TITLE:		BILL OF MATERIAL	
TOLERANCE ON DIMENSIONS: .XX ± 0.02 .XXX ± 0.010 .XXXX ± 0.005 FRACTIONS ± 1/64 ANGLES ± 1/2°		FINISH:		ARM GEAR BOX SPACER IDLER SHAFT LARGE		FEESTO 395 MORELAND ROAD HAUPPAUGE, N.Y. 11788 (516) 435-0800	
DRAWN: _____ DATE: _____		ENGINEER: _____ DATE: _____		DRAWING NO. _____		This document is PROPRIETARY to Feesto Corporation and its contents may not be disseminated to anyone outside your organization or within your organization who does not have need to know its contents	
CHECKED: _____ DATE: _____		DO NOT SCALE DRAWING		SCALE: _____		SHEET _____ OF _____	
ENDORSED: _____ REV 8				FILE NAME: _____		REV _____	

PROA

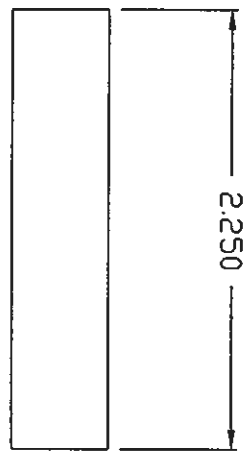
Prod.

2 pcs Aluminum

REVISIONS		
REV	DESCRIPTION	DATE



DRILL 1/4" THRU



2-15-01

UNLESS OTHERWISE SPECIFIED DIMENSIONS ARE IN INCHES

TOLERANCE ON DIMENSIONS:
 X± 0.02
 .XX± 0.010
 .XXX± 0.005
 FRACTIONS ± 1/64
 ANGLES ± 1/2°

MATERIAL:	
FINISH:	
DRAWN	DATE
CHECKED	DATE
ENGINEER	DATE
END000001 REV 8	

TITLE:	
ARM GEAR BOX STANDOFF	
SIZE	DRAWING NO.
A	
SCALE:	FILE NAME:
SHEET	OF

ITEM	QTY	PART NUMBER	DESCRIPTION	MATERIAL

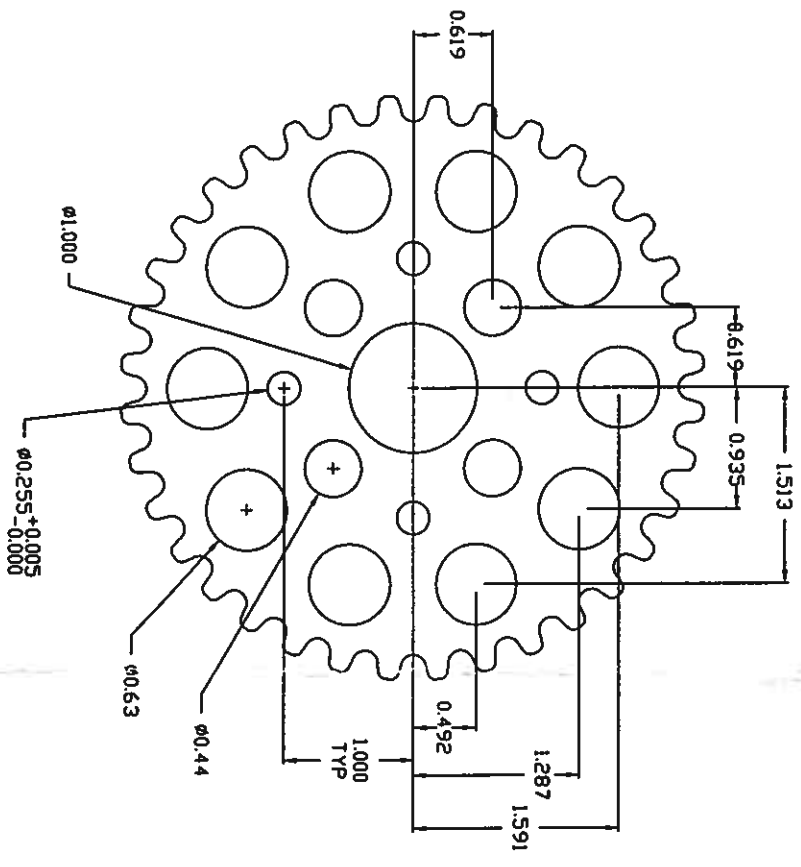
BILL OF MATERIAL

FESTO

395 MORELAND ROAD
 HAUPPAUGE, N.Y. 11788
 (516) 435-0800

This document is PROPRIETARY to Festo Corporation and its contents may not be disseminated to anyone outside your organization or within your organization who does not have need to know its contents

REVISIONS			
REV	DESCRIPTION	DATE	DRAWN BY



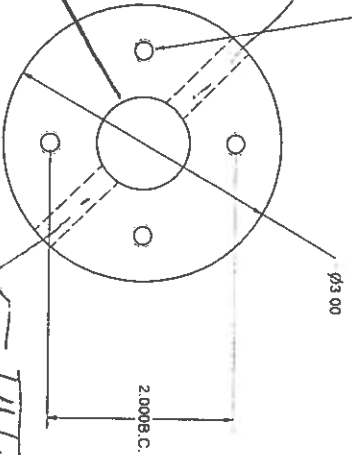
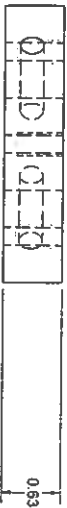
Small parts

2/14/01

UNLESS OTHERWISE SPECIFIED DIMENSIONS ARE IN INCHES	
TOLERANCE ON DIMENSIONS:	
.XX ± 0.02	
.XXX ± 0.010	
.XXXX ± 0.005	
FRACTIONS ± 1/64	
ANGLES ± 1/2°	

MATERIAL:		TITLE:	
FINISH:		TOOTH SPROCKET	
ORDER DATE:		395 MORELAND ROAD	
ORDER DATE:		HAUPPAUGE, N.Y. 11788	
ORDER DATE:		(516) 433-0800	
ORDER DATE:		PESTO	
DO NOT SCALE DRAWING		This document is PROPRIETARY to Festo Corporation and its contents may not be disseminated to anyone outside your organization or other your organization who does not have need to know its contents	

1/4-20 UNC Typ. (4) p/ces on a 2" diameter B.C.
 ± 0.50



1.000 ± .005
 - .000

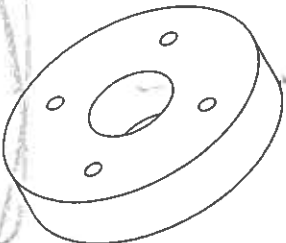
Ø0.252 Through both sides
 must meet 11 spec



0.31

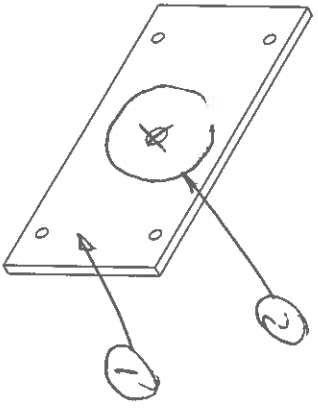
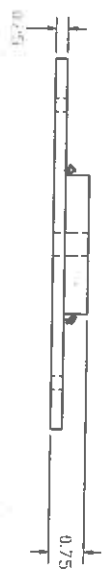


3" ALUM Red
 from Small parts
 (2) req'd



ALUM @ stock.
 2-13-01

DRAWN	hobani	2/13/01	TITLE	
CHECKED				
QA				
ENG				
APPROVED				
SIZE	C	DWG NO		REV
SCALE	1	SHEET	1	OF 1

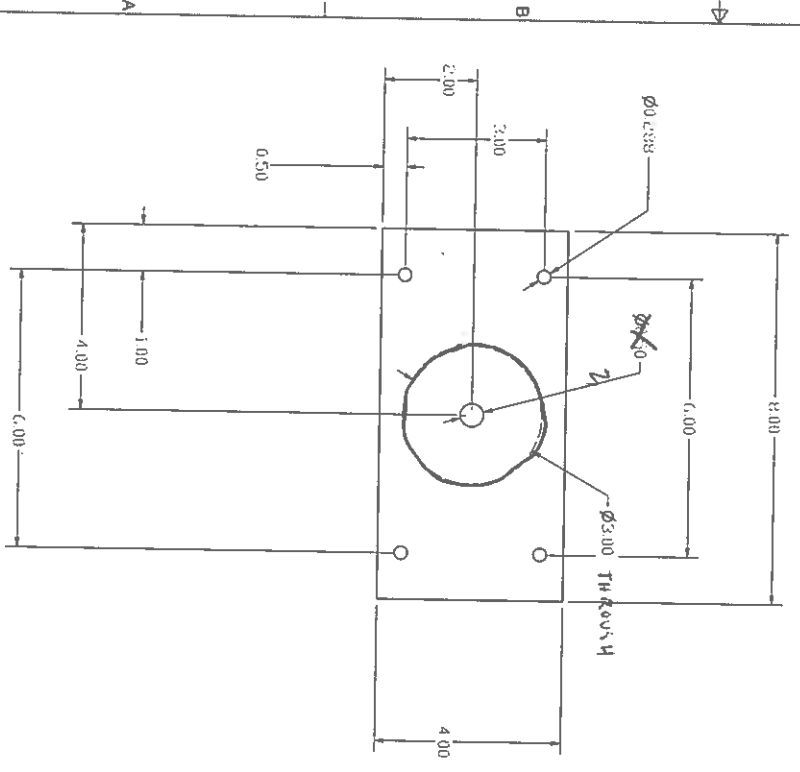
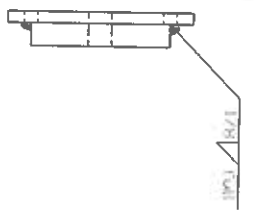


Material:

- ① 8 x 4 x 1/4" Alum Plate
- ② 3" Alum Round

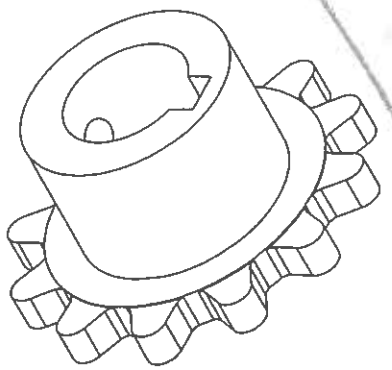
small parts

(2) Required

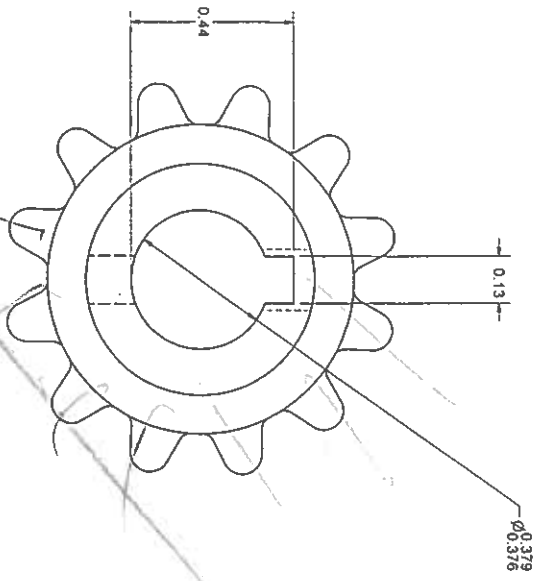


4	3	2	1	6	1
---	---	---	---	---	---

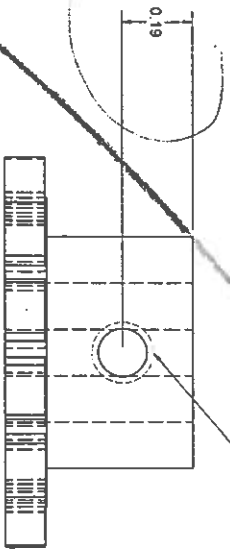
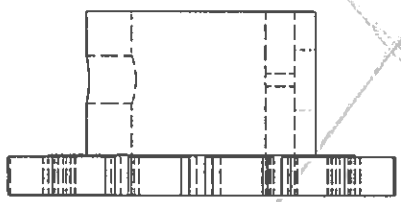
FIRST 2001
Print Plate



Revised drawing



0.32 lap through side opposite keyway



(2) Required

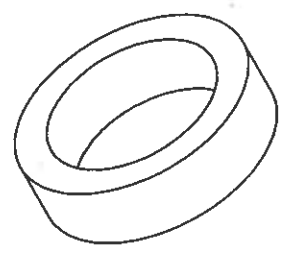
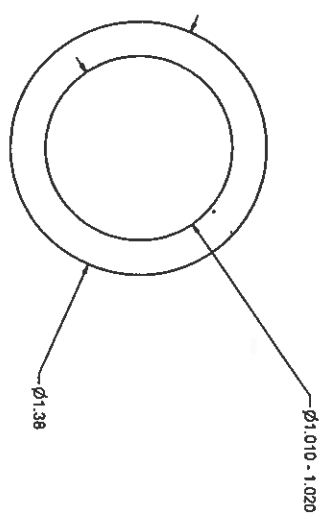
Small part

DESIGNER	2/8/01	TITLE	
CHECKED		SCALE	C
QA		SIZE	
MFG		DWG. NO.	
APPROVED		REV	
Inglant		2/8/01	

2

SHEET 1 OF 1

Handwritten notes: $3/4$ bar



Small parts

Required: 2
Material: Delrin

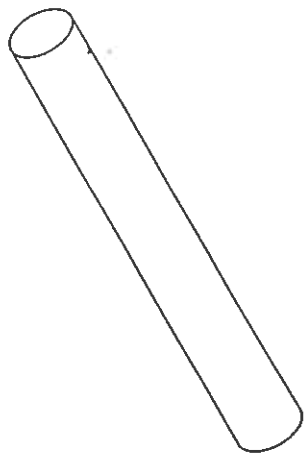
(2) REQ'D

2-5-01

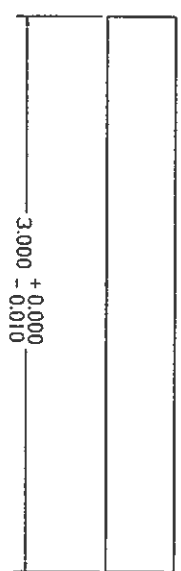
DRAWN	2/10/01	TITLE	Small pivot sprocket spacer
CHECKED		SIZE	C
DATE		SCALE	1:1
APPROVED		SHEET	1 of 1

Next page 1/10

4 pcs



$\phi 0.375 \pm 0.000$
 $- 0.002$



3.000 ± 0.000
 $- 0.010$

3/8" Rad

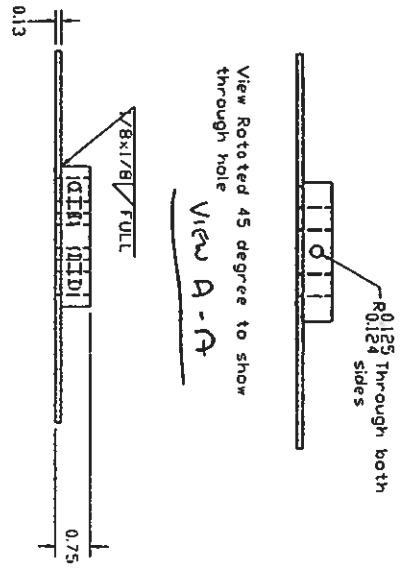
STEEL

Steel

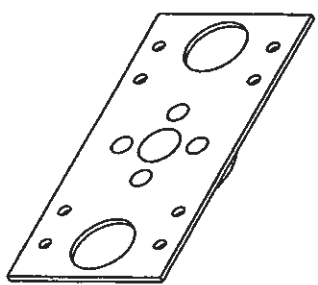
Dimensions in inches

3/8" Rad

NO	QTY	DESCRIPTION	UNIT
1	4	WHEEL SHAFT	PCS

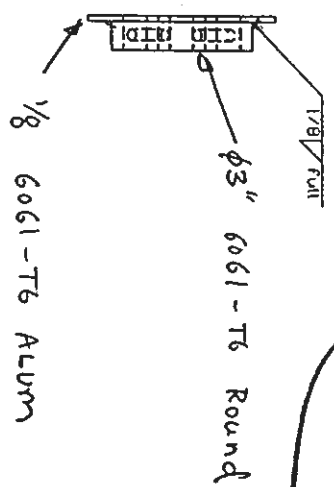


1-31-01
 Done (Approved).
 Can this be made from 1 piece? If yes? If the Fin ready? Make as two pieces, to be screwed together.
 No

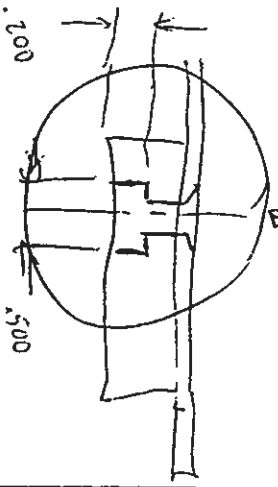
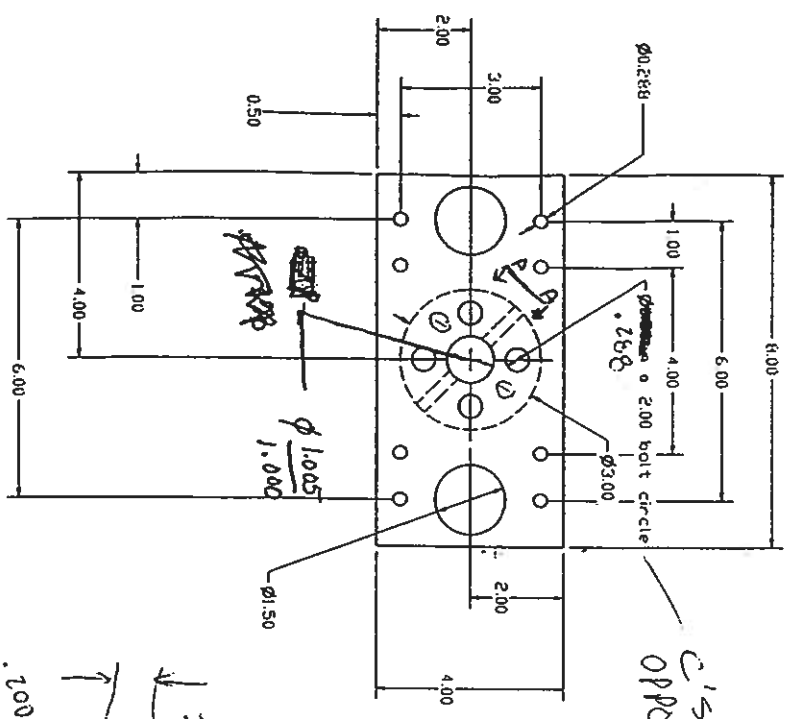


1/8 ALUM

(2) REQ'D



C/SIDE FROM OPPOSITE SIDE
 C/BORE .5000A
 X .200 DP,
 FROM THIS SIDE
 See Detail



REV	DATE	DESCRIPTION
1		Pivot Plate
2		Revisions 2/11/01

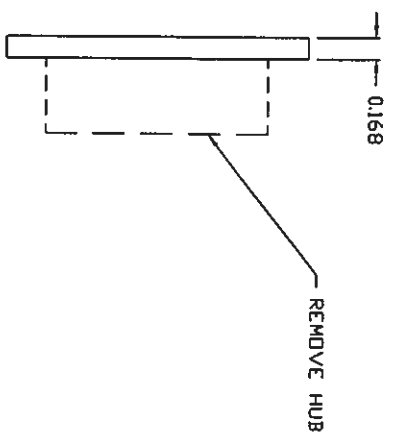
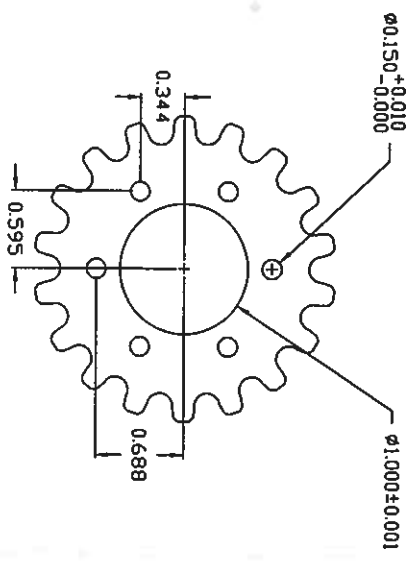
2-05-01
 dm

2-8-01
 dm

DATA

REVISIONS		
REV	DESCRIPTION	DATE
80		

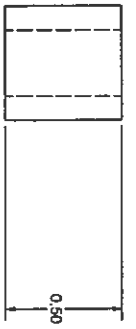
1 pc



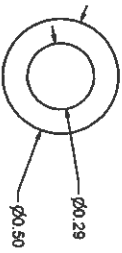
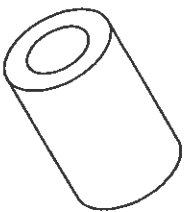
Small parts

2-14-07 4:45

<p>UNLESS OTHERWISE SPECIFIED DIMENSIONS ARE IN INCHES</p> <p>TOLERANCE ON DIMENSIONS:</p> <p>.XX ± 0.02</p> <p>.XXX ± 0.010</p> <p>.XXXX ± 0.005</p> <p>FRACTIONS ± 1/64</p> <p>ANGLES ± 1/2°</p>		<p>MATERIAL:</p> <p>FINISH:</p> <p>DATE: _____ DATE: _____</p> <p>ORDER: _____ DATE: _____</p> <p>DESIGN: REV # _____</p>		<p>DO NOT SCALE DRAWING</p>	
<p>ITEM X</p> <p>QTY</p> <p>PART NUMBER</p>		<p>DESCRIPTION</p> <p>BL. OF MATERIAL</p>		<p>SCALE: B</p> <p>SIZE: DRAWING NO.</p> <p>REV: _____</p>	
<p>18TOOTH SPROCKET</p>		<p>18TOOTH SPROCKET</p>		<p>395 MORELAND ROAD HAUPPAUGE, N.Y. 11788 (516) 435-0800</p> <p>PESTO</p> <p>This document is PROPRIETARY to Festo Corporation and its contents may not be disseminated to anyone outside your organization or within your organization who does not have need to know its contents</p>	



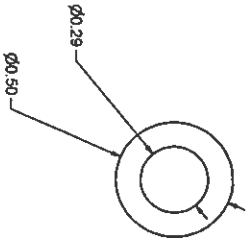
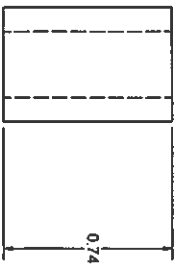
(6) REQ'D



shaft

Long

(6) REQ'D



MATERIAL 0.5 DELRIN GEAR

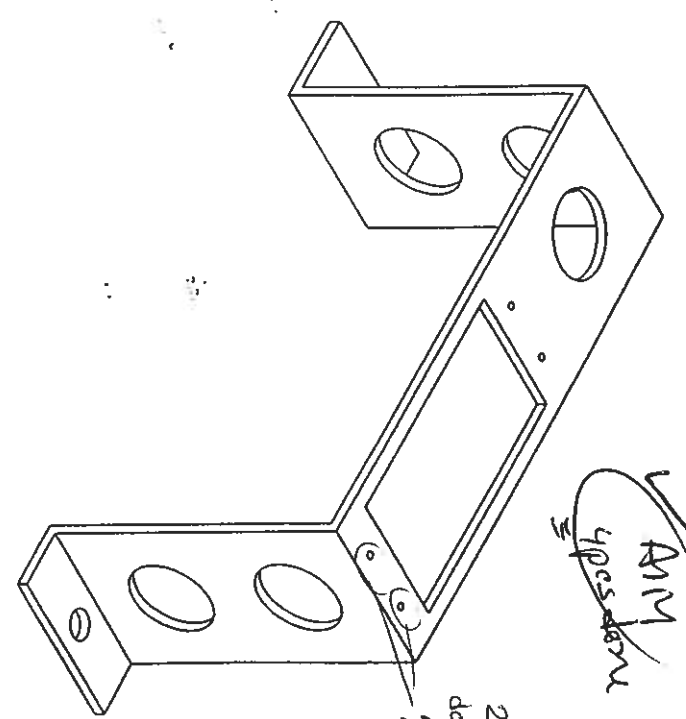
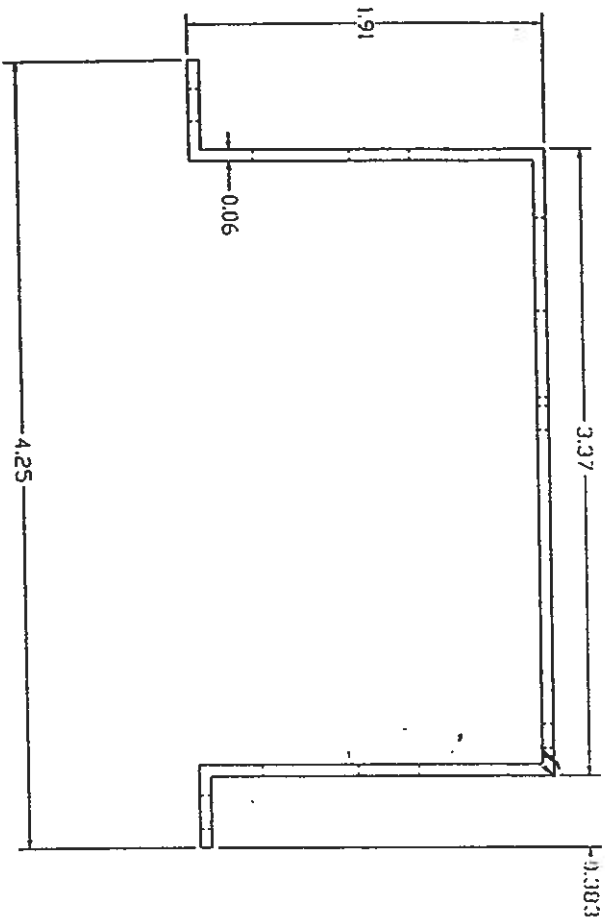
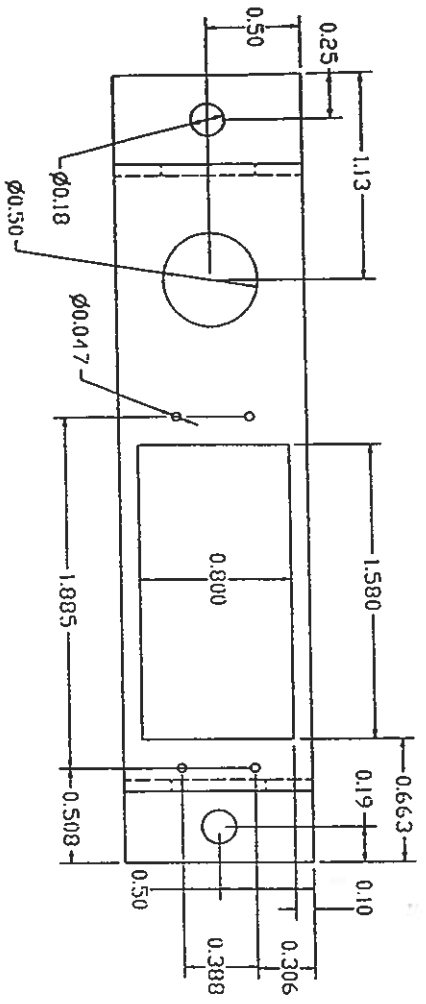
2-5-01

DESIGNED	2/1/01	TITLE	FASTER-GEAR SPACERS
CHECKED		SCALE	1:1
QA		SIZE	C
INFO		REV	
APPROVED		SHEET	1 OF 1

1 7/16
83/9

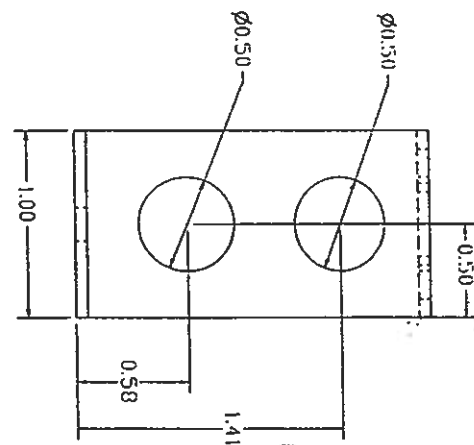
10

2 pcs Steel



AM
4 pcs down

2/14/01
down holding
will be at
off the neck.

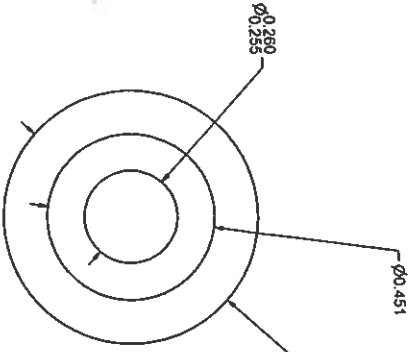
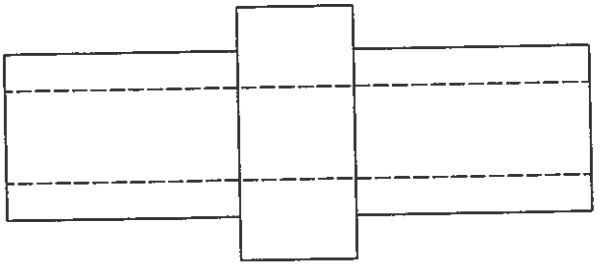


16 Ga STL

(2)

2-9-01

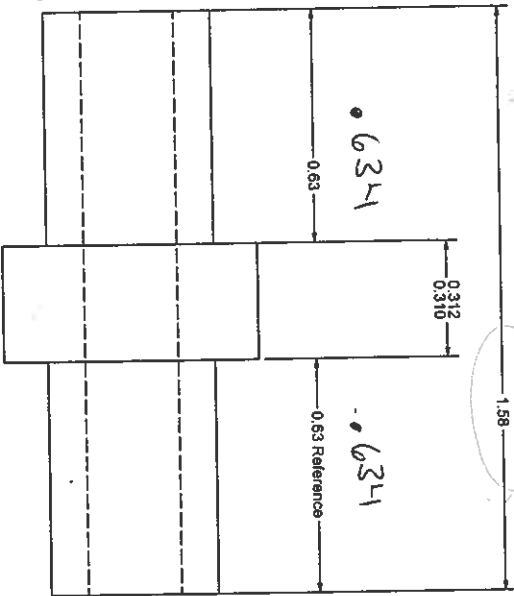
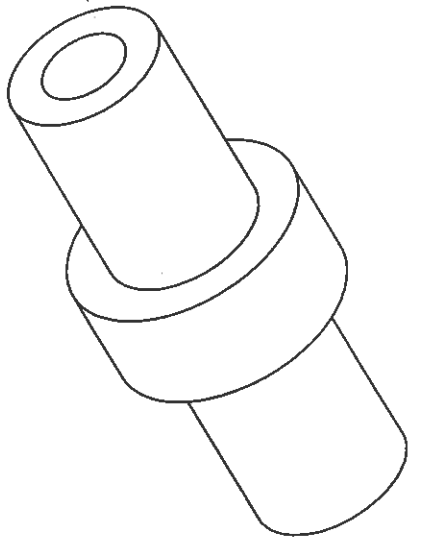
DESIGN	hokurai	2/9/01	TITLE	
ENGINEER				
QA				
DWG NO			servo bracket	
APPROVED				
SCALE	C	1		



X
 Z .600
 .687
 .451
 .236

~~SECRET~~
 A

3 hrs
JFM

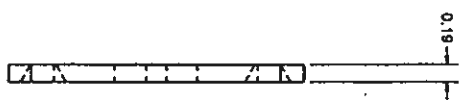
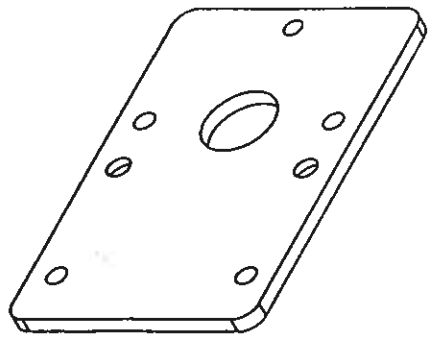
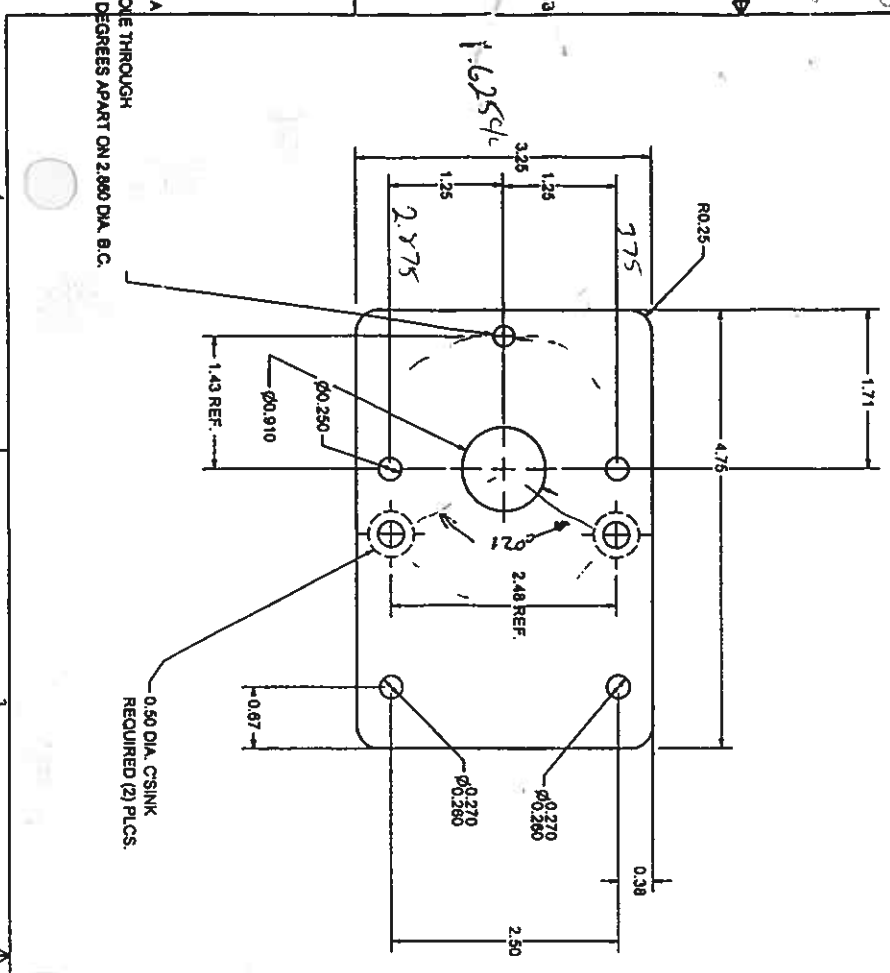


Brass from Small parts
 2-5-01

DESIGN	1	1/31/01		
CHECKED				
QA				
INFO				
APPROVED				
DATE	C		DRG NO	
SCALE			lower tele bearing	
SHEET	1			REV

Floydmar

X-28 Y-1.625
 X-2.425 Y-2.8635
 Y-.3865



MATERIAL: .188" THICK 6061-T6 ALUMINUM SHEET

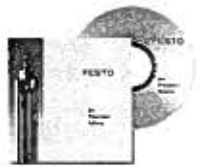
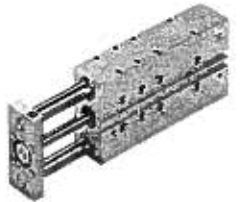
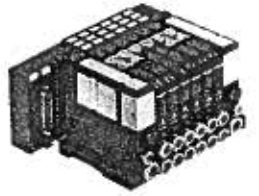
(1) REQ'D

(1) 3/16 ALUM

2-5-01

DESIGN	2401	DATE	
ENGINEER		APPROVED	
DWG		SCALE	1:1
EAGLE-VAN DOOR		MOUNTING PLATE	
SHEET 1		REV 1	

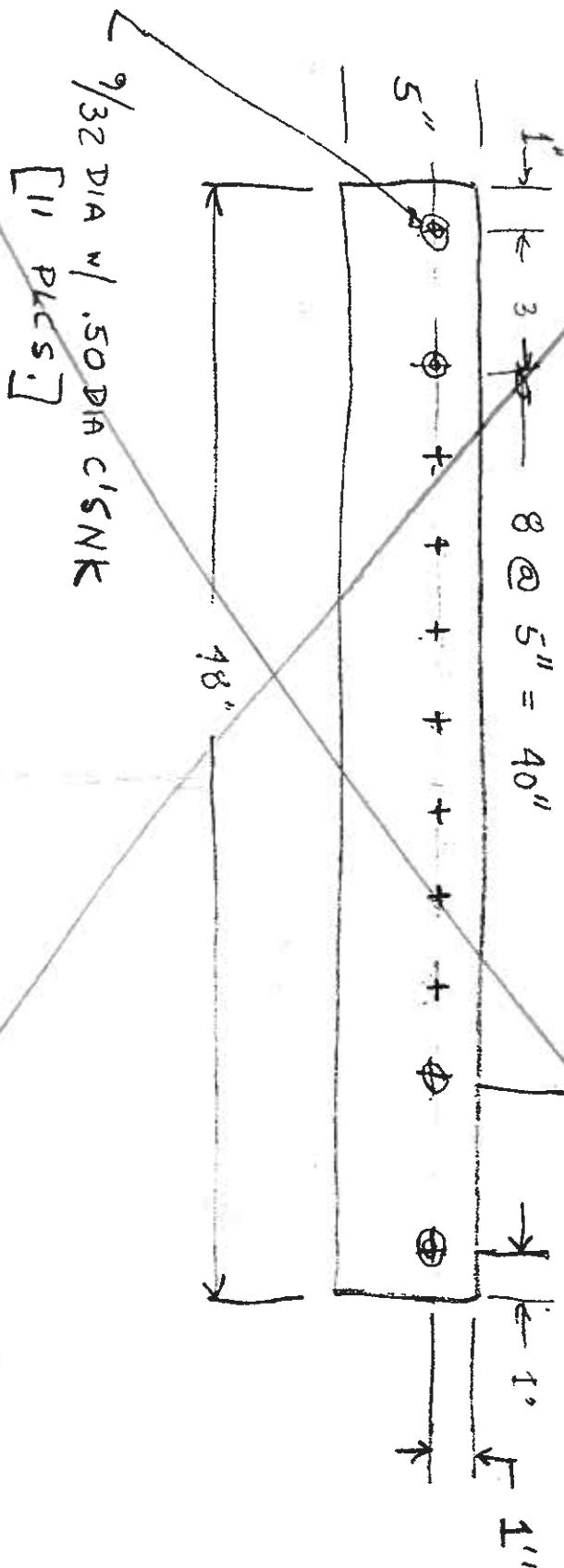
FESTO



Vancouver
Windsor
Kitchener
Montreal
Quebec

Festo Inc.

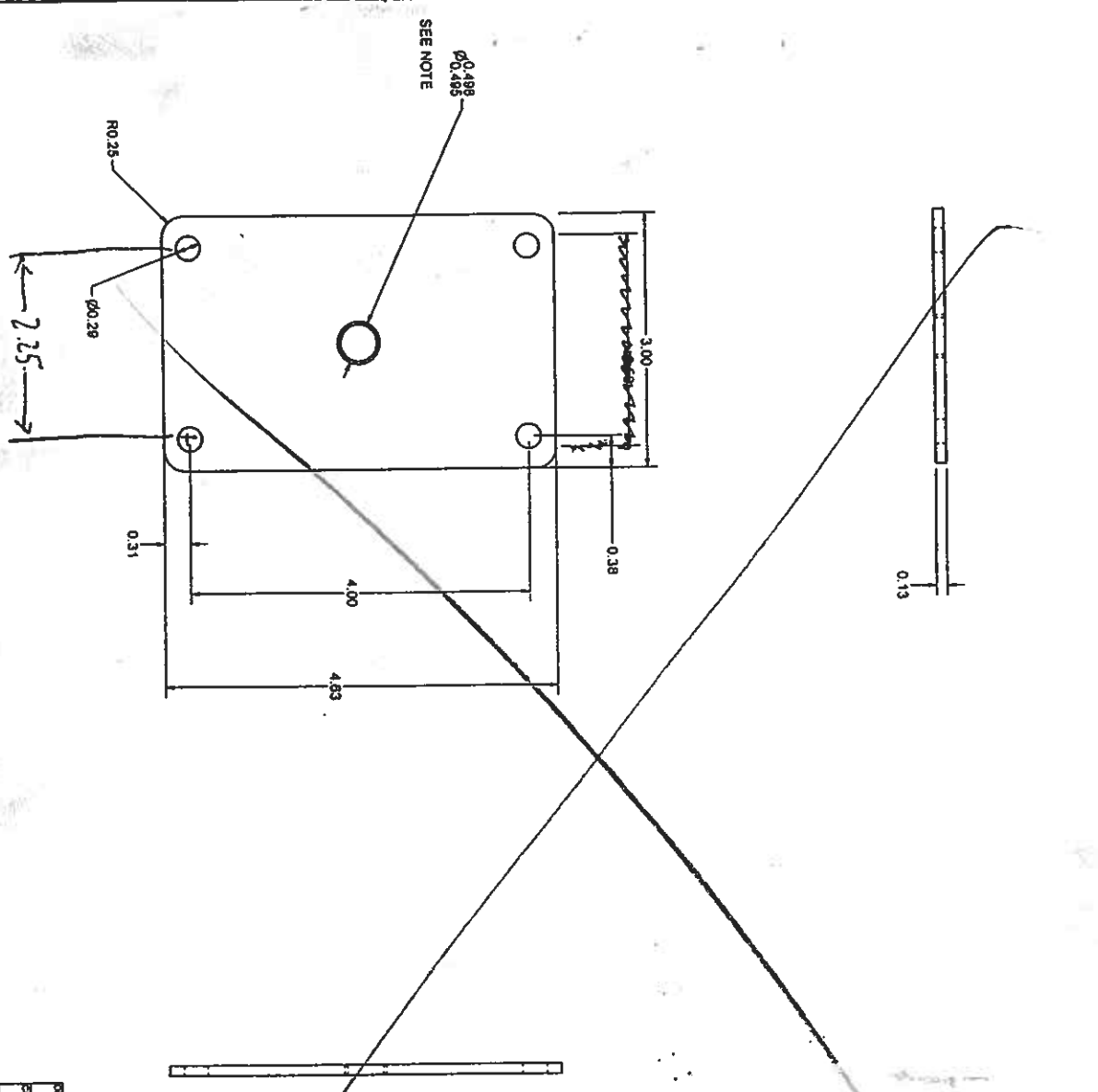
5300 Explorer Drive
Mississauga, Ontario
L4W 5G4
Phone 905 624 9000
Fax 905 624 9001
E-mail: info_ca@festo.com



MAT'L: $\frac{1}{8}$ " x 5" Flat Steel Bar

2 Req'd

Flaymar



NOTE:
 0.80 HOLE FOR PRESS FIT OF OULITE BUSHING. AFTER BUSHING IS PRESSED IN, ID OF BUSHING MUST BE OPENED TO 0.431/0.435"

MATERIAL: 1/8 ALUMINUM SHEET

(1) REAM

2-5-01

DESIGN	24601	TITLE	PIVOT VAN DOOR MOUNT BUSHING SUPPORT PLATE	
ENGINEER		DATE	SCALE	SHEET 1
APPROVED		REV		
DATE		REV		